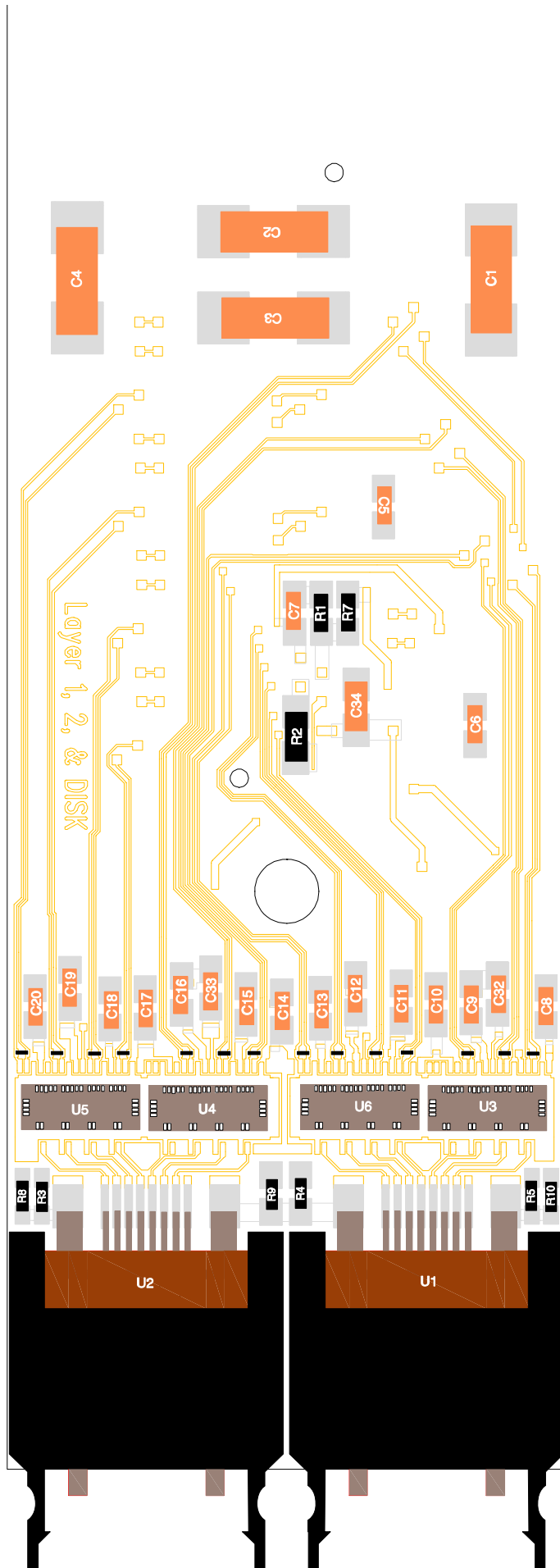
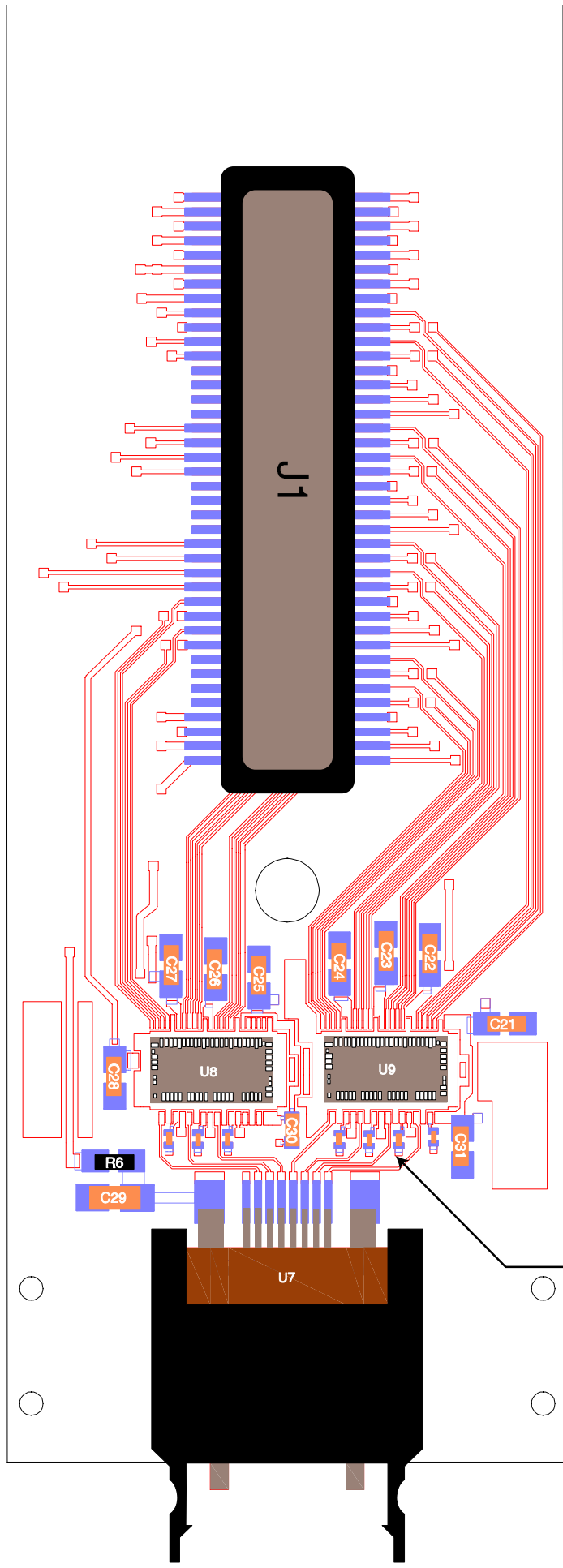


Layer 1, 2, and Disk
Opto-Board

Series
2000 & 3000

75 ohm (printed)
qty. 14



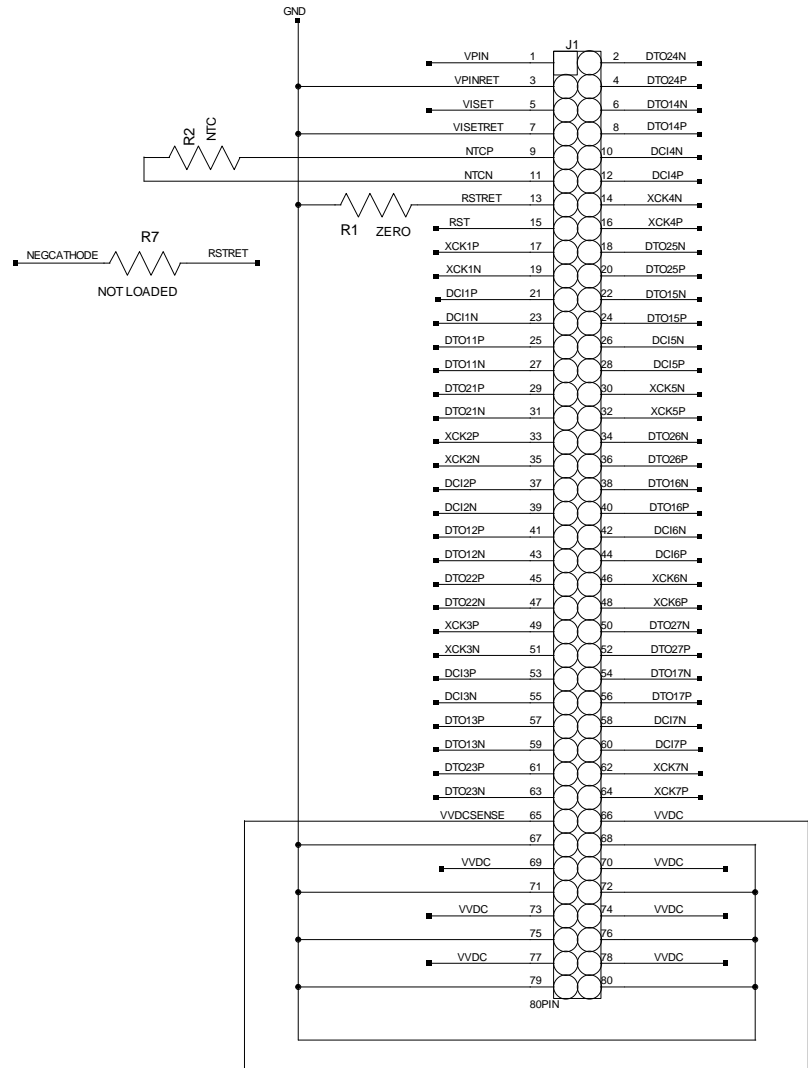


Layer 1, 2, and Disk
Opto-Board

Series
2000 & 3000

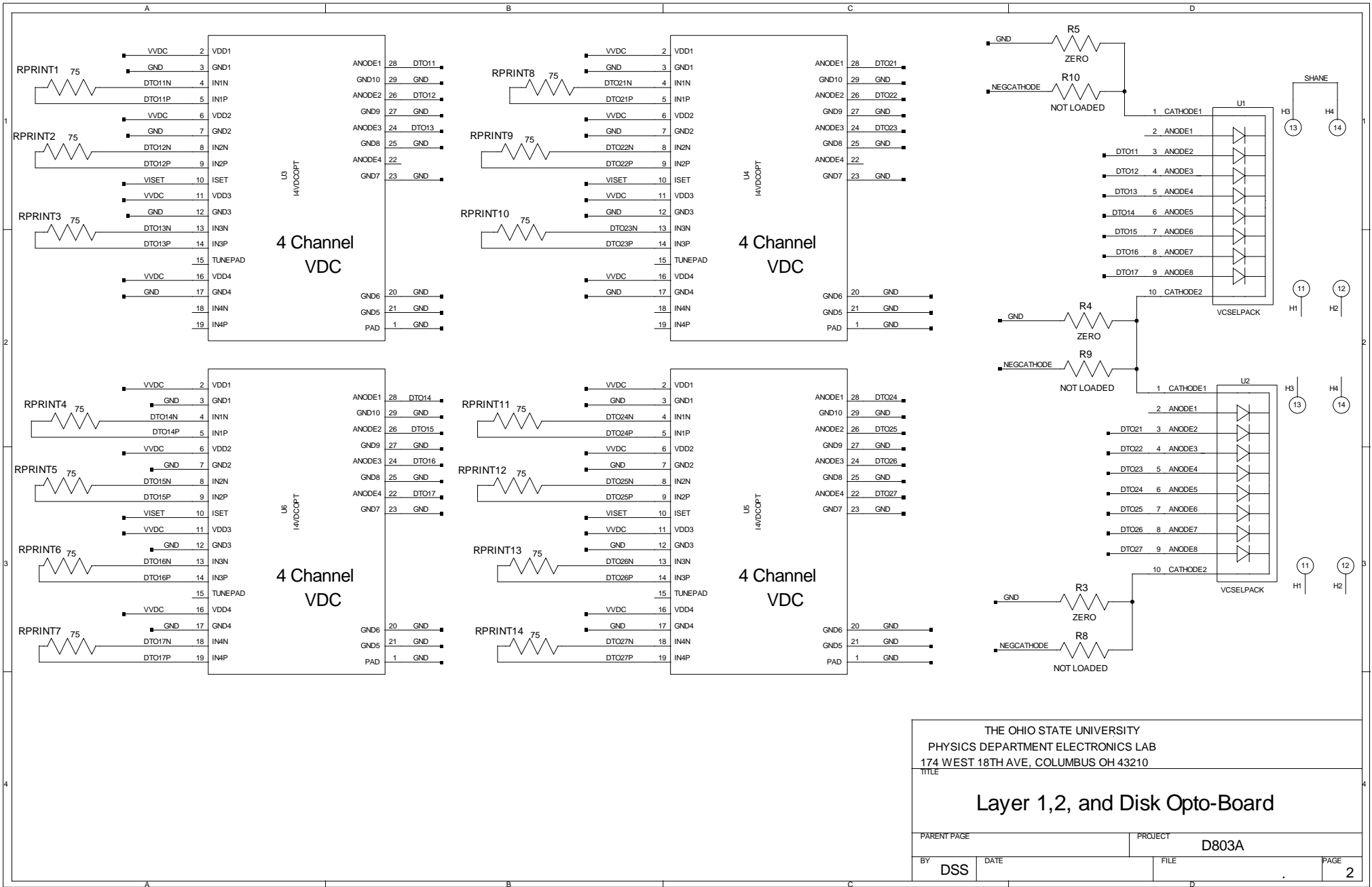
Unloaded DORIC
Compensation Caps
qty. 7

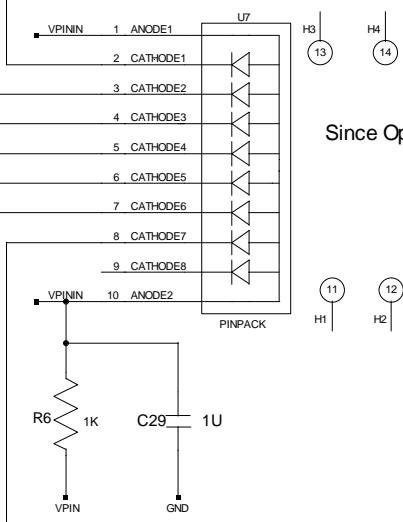
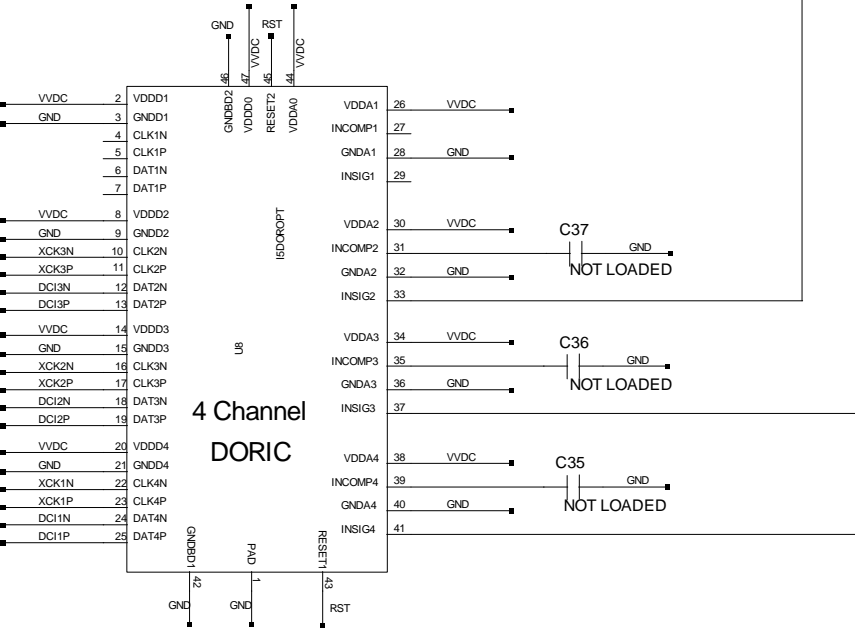
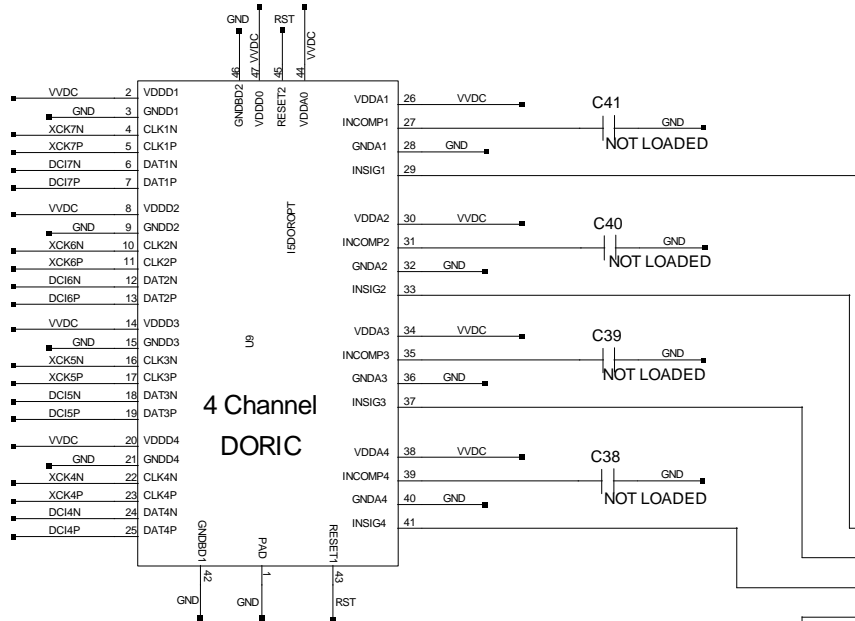
this direction towards chips and optopacks



View is as if looking through the opto-board or as if looking down on PP0.

THE OHIO STATE UNIVERSITY PHYSICS DEPARTMENT ELECTRONICS LAB 174 WEST 18TH AVE, COLUMBUS OH 43210			
TITLE Layer 1,2, and Disk Opto-Board			
PARENT PAGE		PROJECT D803A	
BY DSS	DATE	FILE	PAGE 1

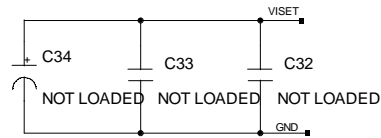
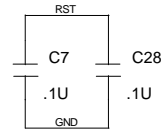
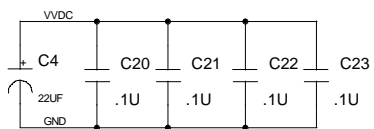
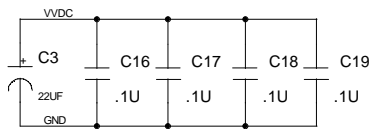
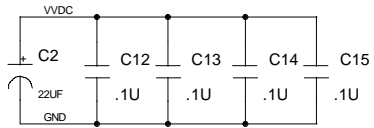
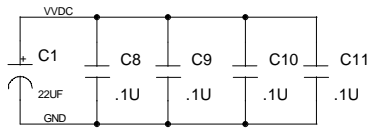
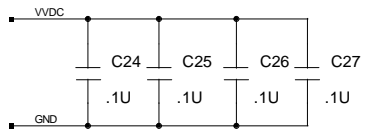
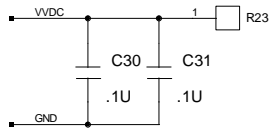




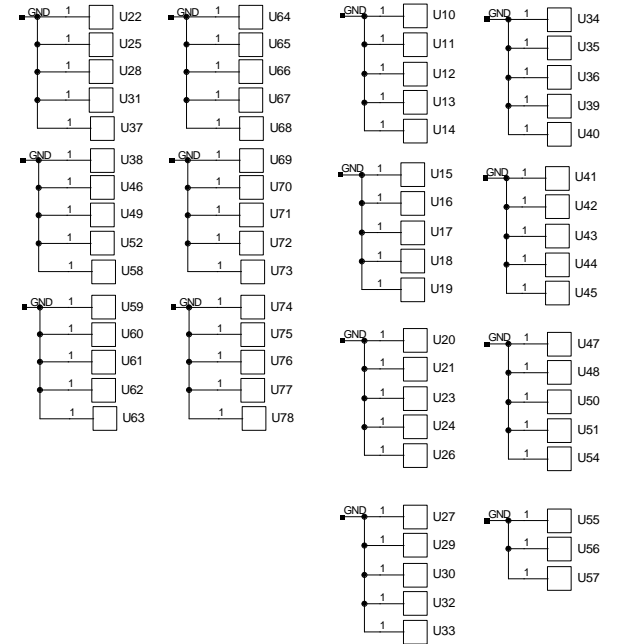
Since Opto-Pack bottom mounted, Cathodes in reverse order
Spare will be fiber #1

THE OHIO STATE UNIVERSITY PHYSICS DEPARTMENT ELECTRONICS LAB 174 WEST 18TH AVE, COLUMBUS OH 43210			
TITLE Layer 1,2, and Disk Opto-Board			
PARENT PAGE		PROJECT D803A	
BY DSS	DATE	FILE	PAGE 3

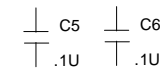
pad for bonding VVDC protection diodes



Pads for connecting chip substrates to GND



dummy caps for mechanical test



THE OHIO STATE UNIVERSITY PHYSICS DEPARTMENT ELECTRONICS LAB 174 WEST 18TH AVE, COLUMBUS OH 43210			
TITLE Layer 1,2, and Disk Opto-Board			
PARENT PAGE		PROJECT D803A	
BY DSS	DATE	FILE	PAGE 4