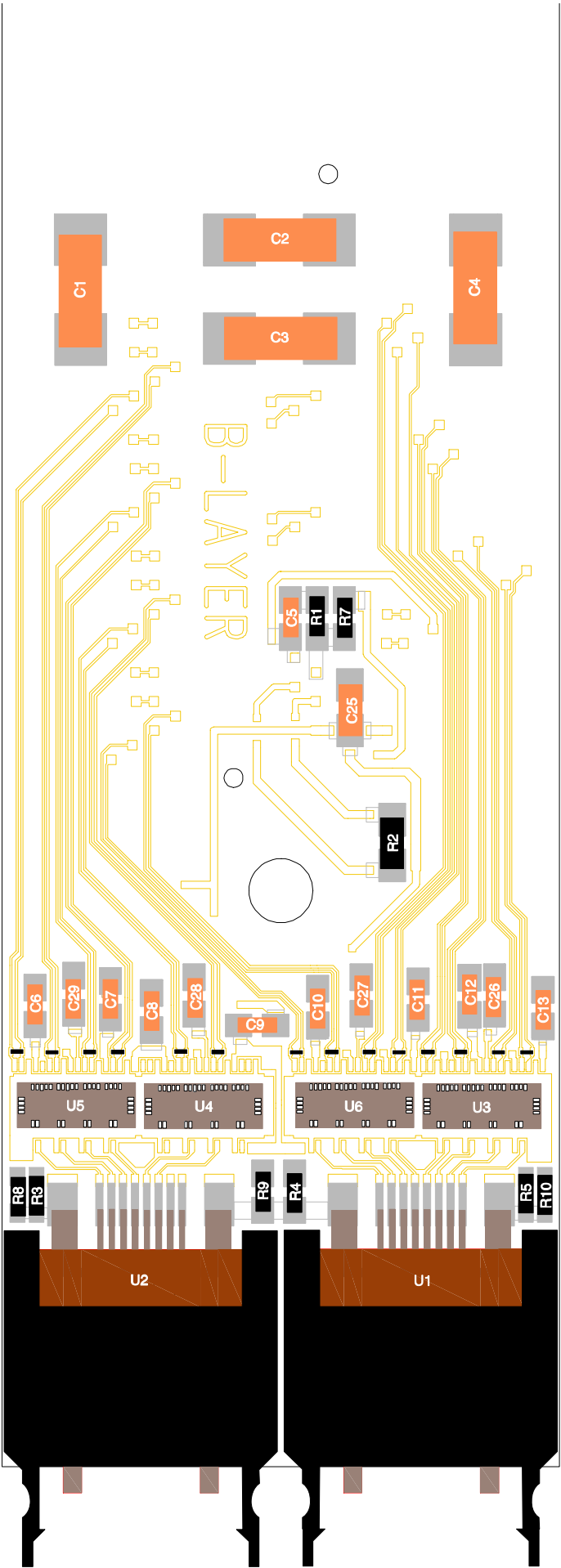


B-Layer Opto-Board

Series
1000

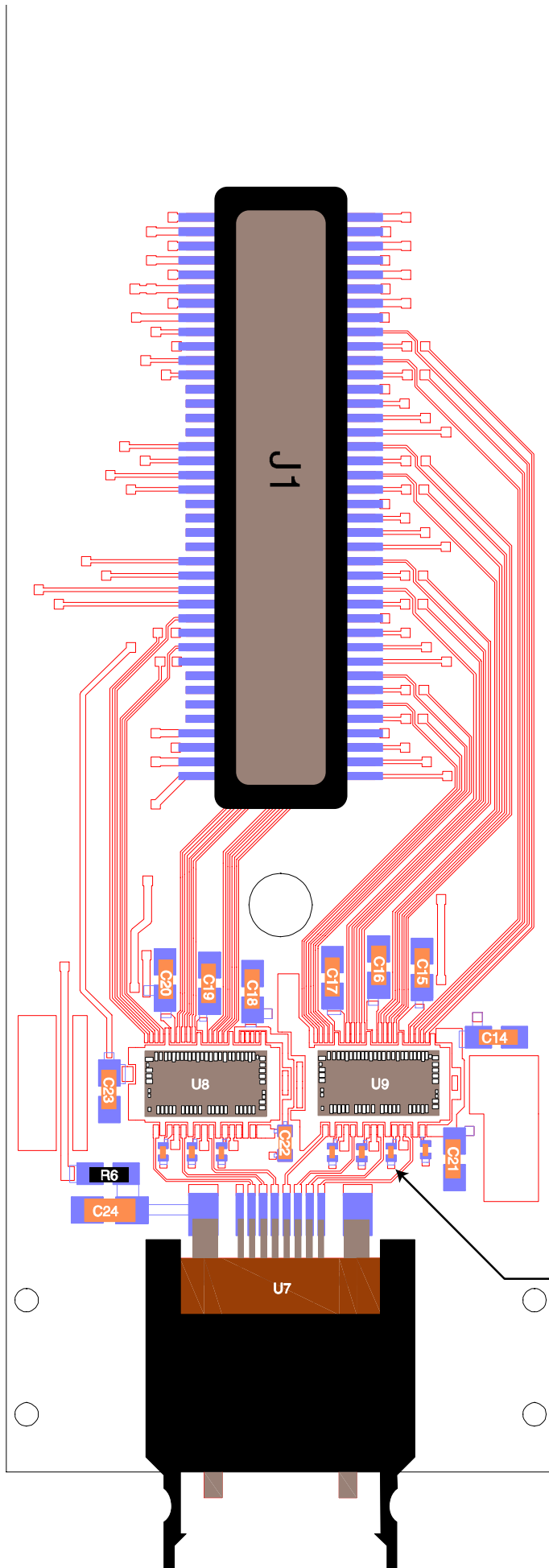


75 ohm (printed)
qty. 14

B-Layer Opto-Board

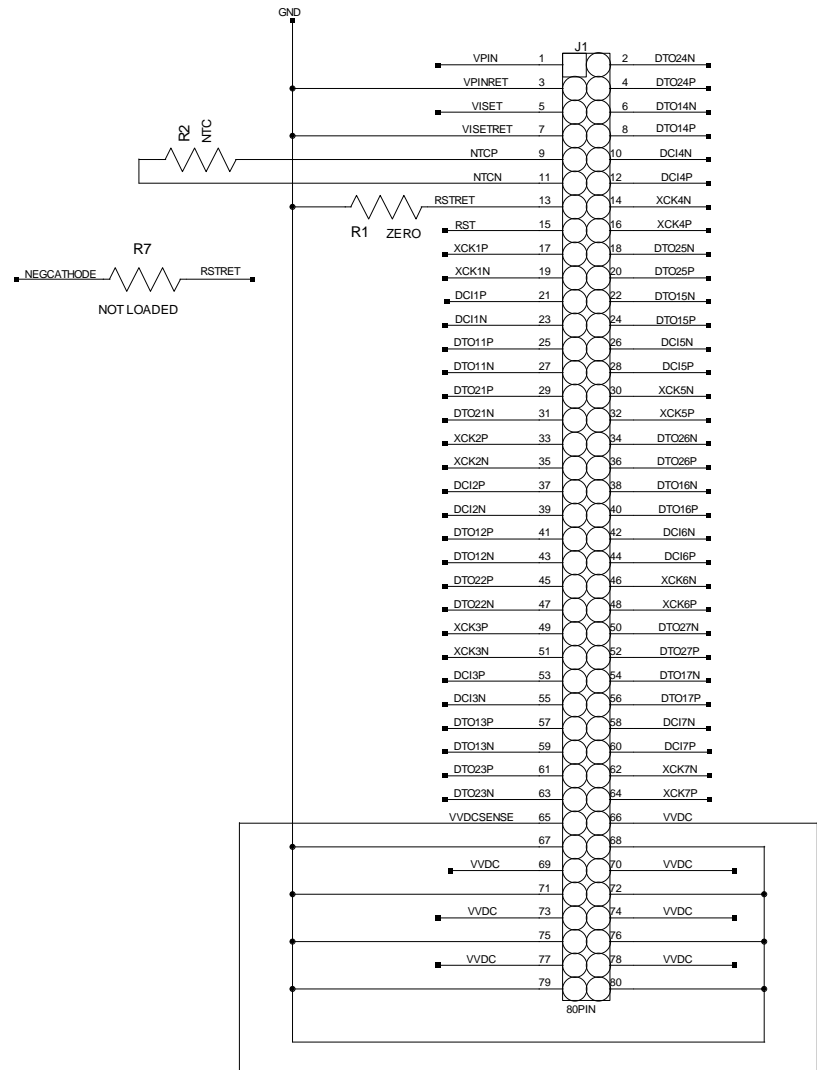
Series

1000



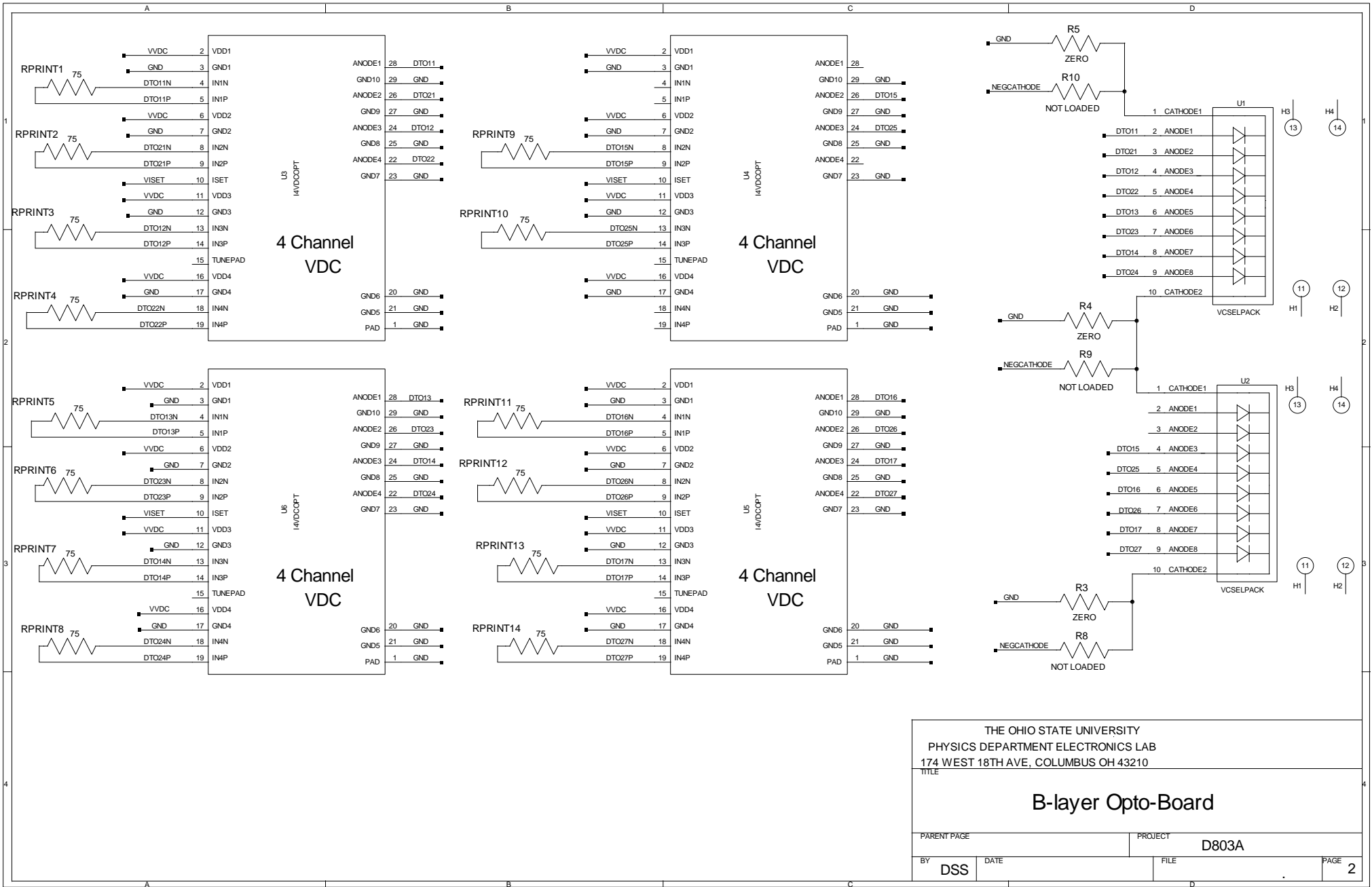
Unloaded DORIC
Compensation Caps
qty. 7

this direction towards chips and optopacks

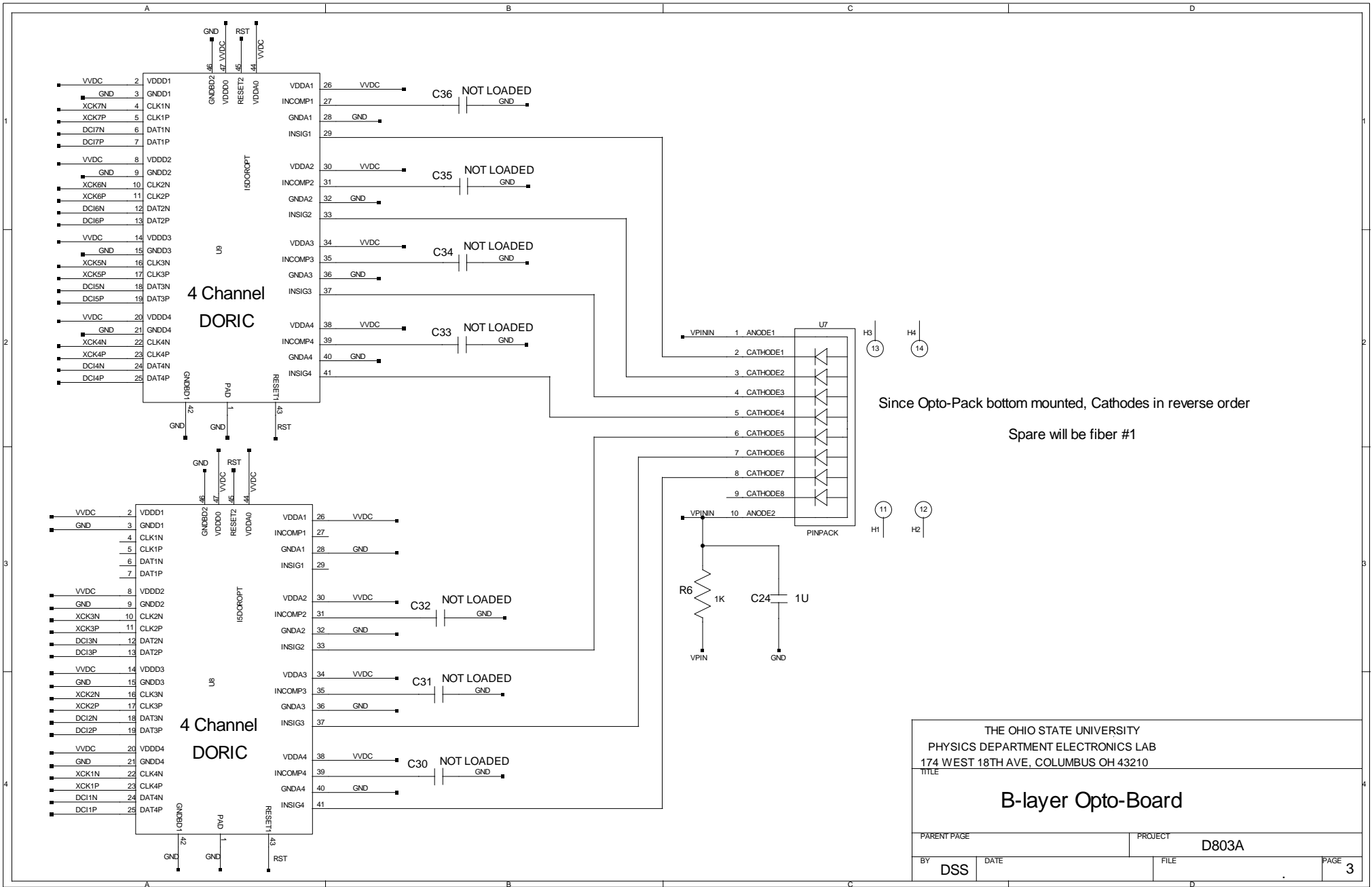


View is as if looking through the optoboard or as if looking down on PP0.

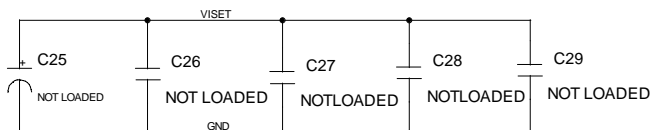
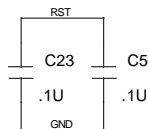
| | | | |
|---|------|------------------|-----------|
| THE OHIO STATE UNIVERSITY PHYSICS DEPARTMENT ELECTRONICS LAB 174 WEST 18TH AVE, COLUMBUS OH 43210 | | | |
| TITLE B-layer Opto-Board | | | |
| PARENT PAGE | | PROJECT D803A | |
| BY DSS | DATE | FILE | PAGE 1 |



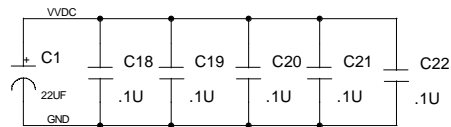
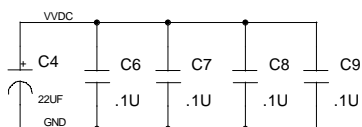
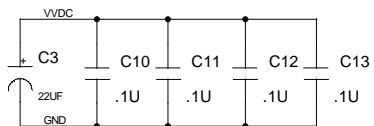
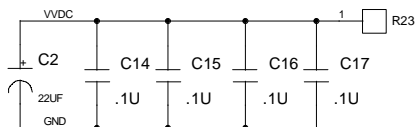
| | | | |
|---|------|---------|------|
| THE OHIO STATE UNIVERSITY PHYSICS DEPARTMENT ELECTRONICS LAB 174 WEST 18TH AVE, COLUMBUS OH 43210 | | | |
| TITLE | | | |
| B-layer Opto-Board | | | |
| PARENT PAGE | | PROJECT | |
| | | D803A | |
| BY | DATE | FILE | PAGE |
| DSS | | | 2 |



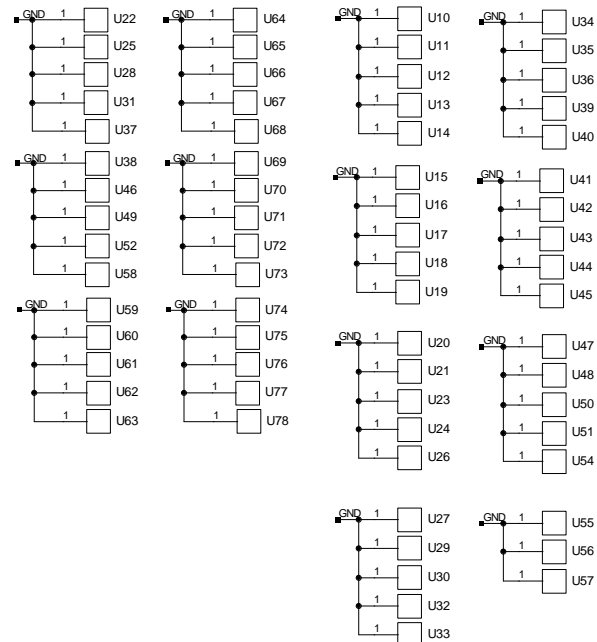
| | | | |
|--------------------------------------|------|---------|------|
| THE OHIO STATE UNIVERSITY | | | |
| PHYSICS DEPARTMENT ELECTRONICS LAB | | | |
| 174 WEST 18TH AVE, COLUMBUS OH 43210 | | | |
| TITLE | | | |
| B-layer Opto-Board | | | |
| PARENT PAGE | | PROJECT | |
| | | D803A | |
| BY | DATE | FILE | PAGE |
| DSS | | | 3 |



pad for bonding VDC protection diodes



Pads for connecting chip substrates to GND



| | | | |
|--------------------------------------|------|---------|------|
| THE OHIO STATE UNIVERSITY | | | |
| PHYSICS DEPARTMENT ELECTRONICS LAB | | | |
| 174 WEST 18TH AVE, COLUMBUS OH 43210 | | | |
| TITLE | | | |
| B-layer Opto-Board | | | |
| PARENT PAGE | | PROJECT | |
| | | D803A | |
| BY | DATE | FILE | PAGE |
| DSS | | | 4 |