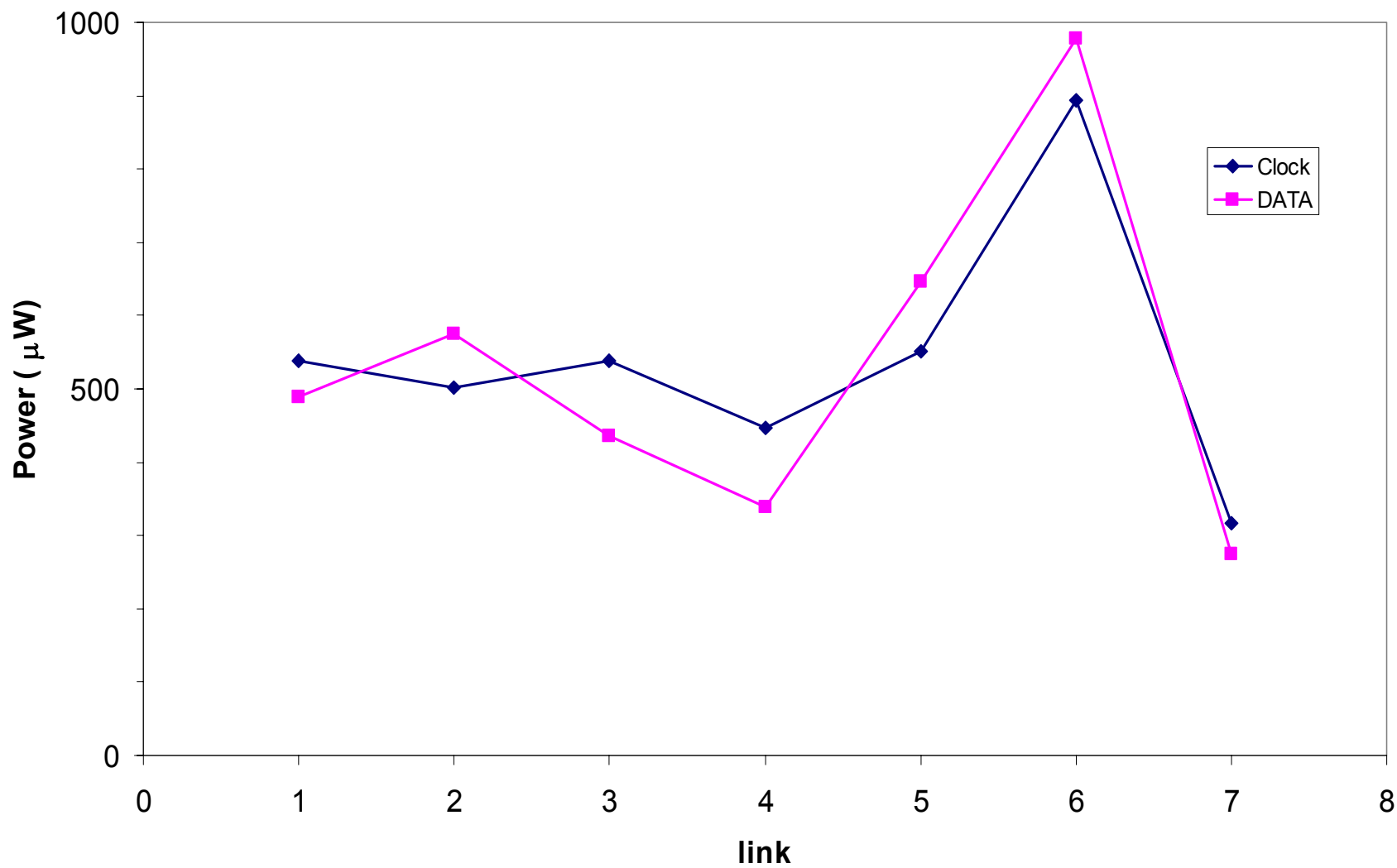


Optical Power

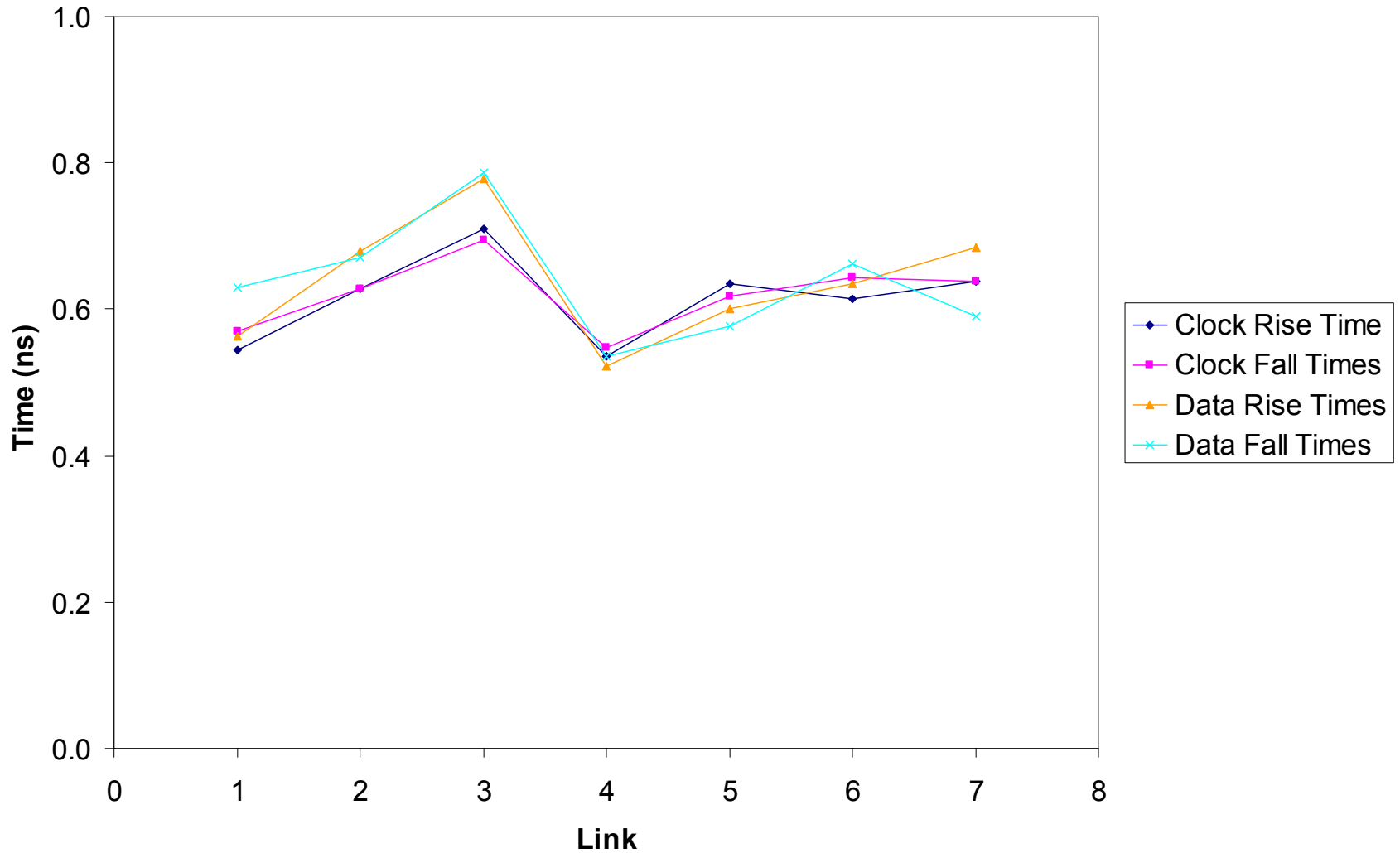


$I_{\text{set}} = 0.6 \text{ mA}$

BeO OPTO-ELECTRICAL QA

1

Electrical Rise and Fall

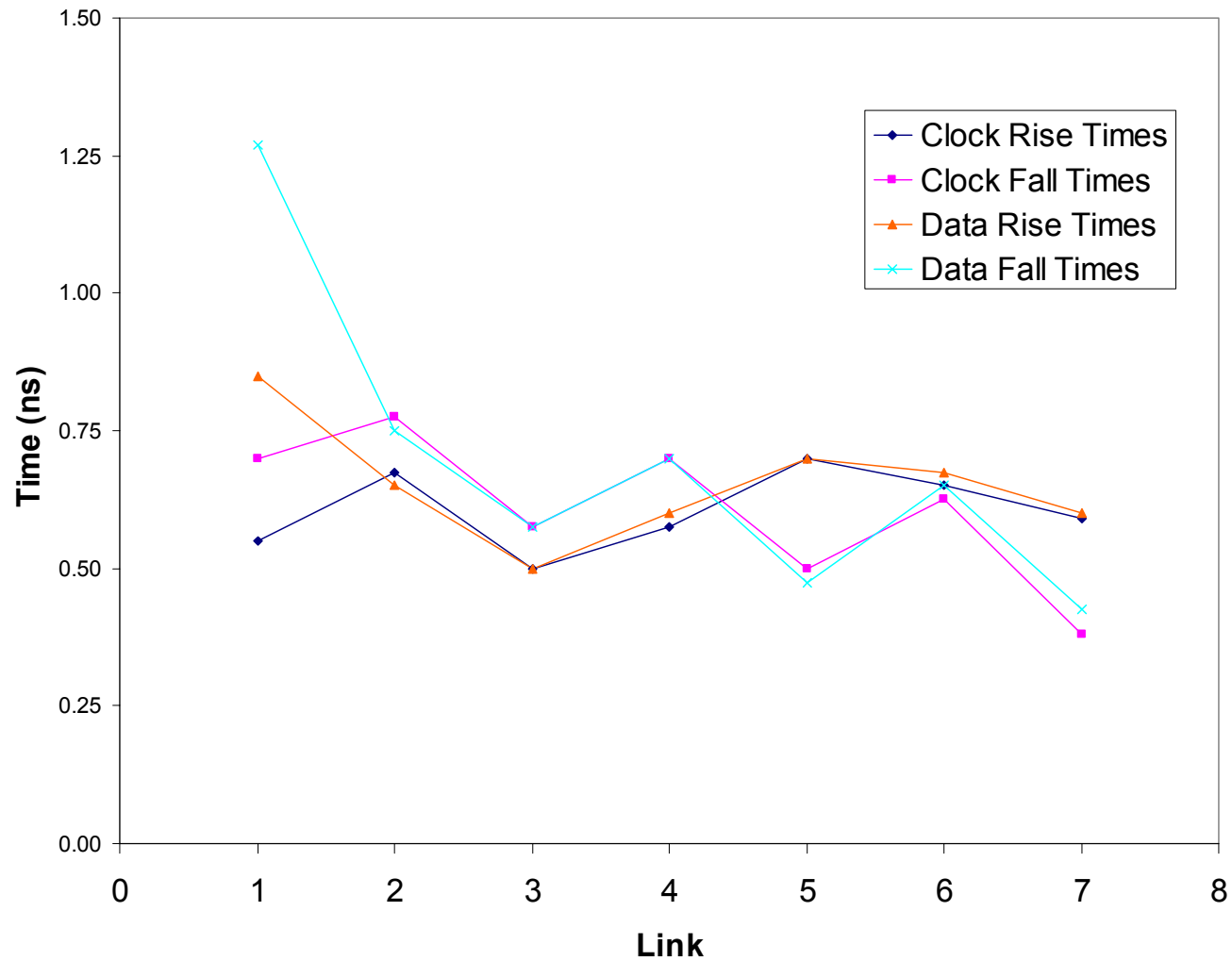


40 MHz, $I_{\text{set}} = 0.6 \text{ mA}$,

PRBS @ $I_{\text{PIN}} = 100 \text{ } \mu\text{A}$

BeO OPTO-ELECTRICAL QA

Optical Rise and Fall Time

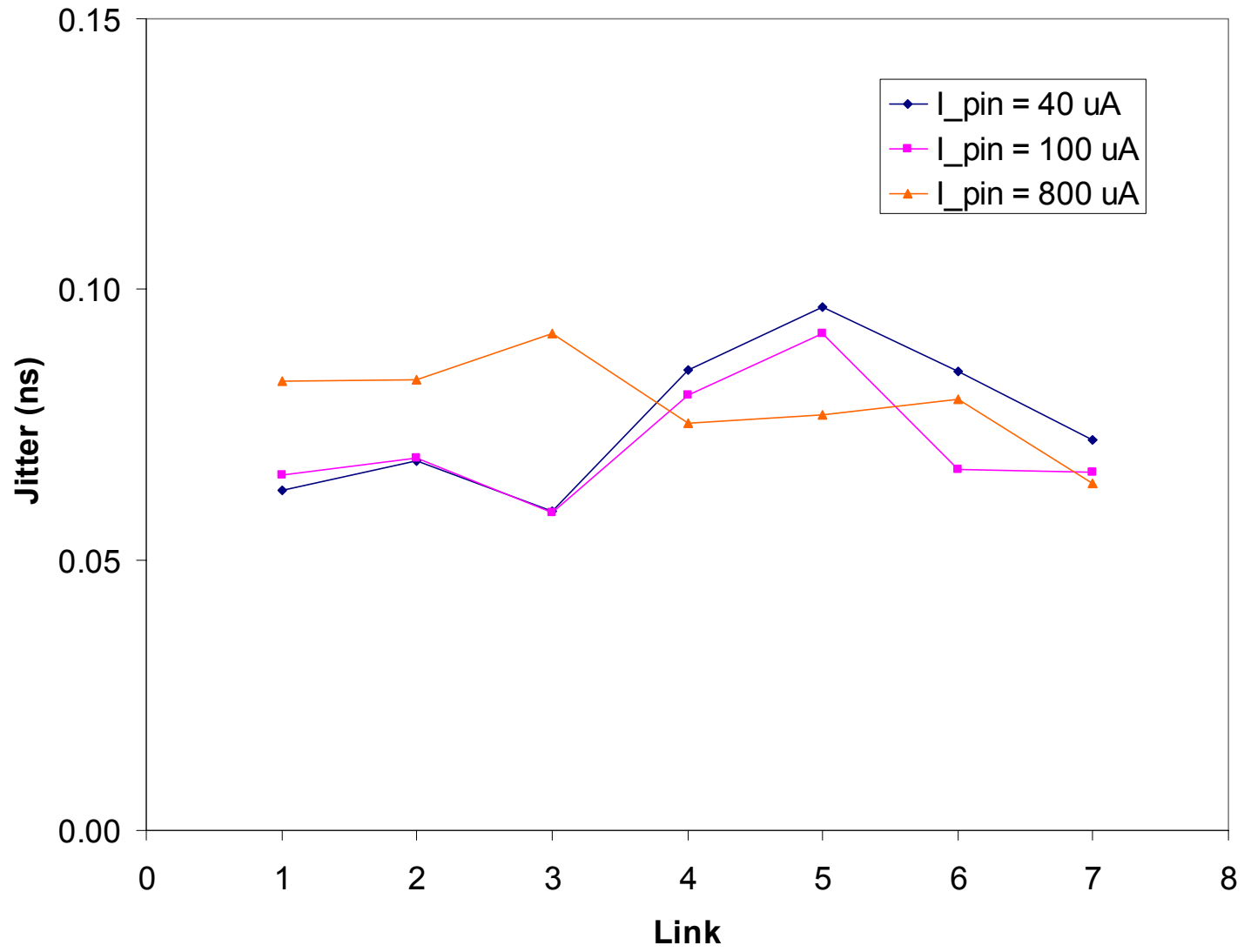


40 MHz, $I_{\text{set}} = 0.6 \text{ mA}$,

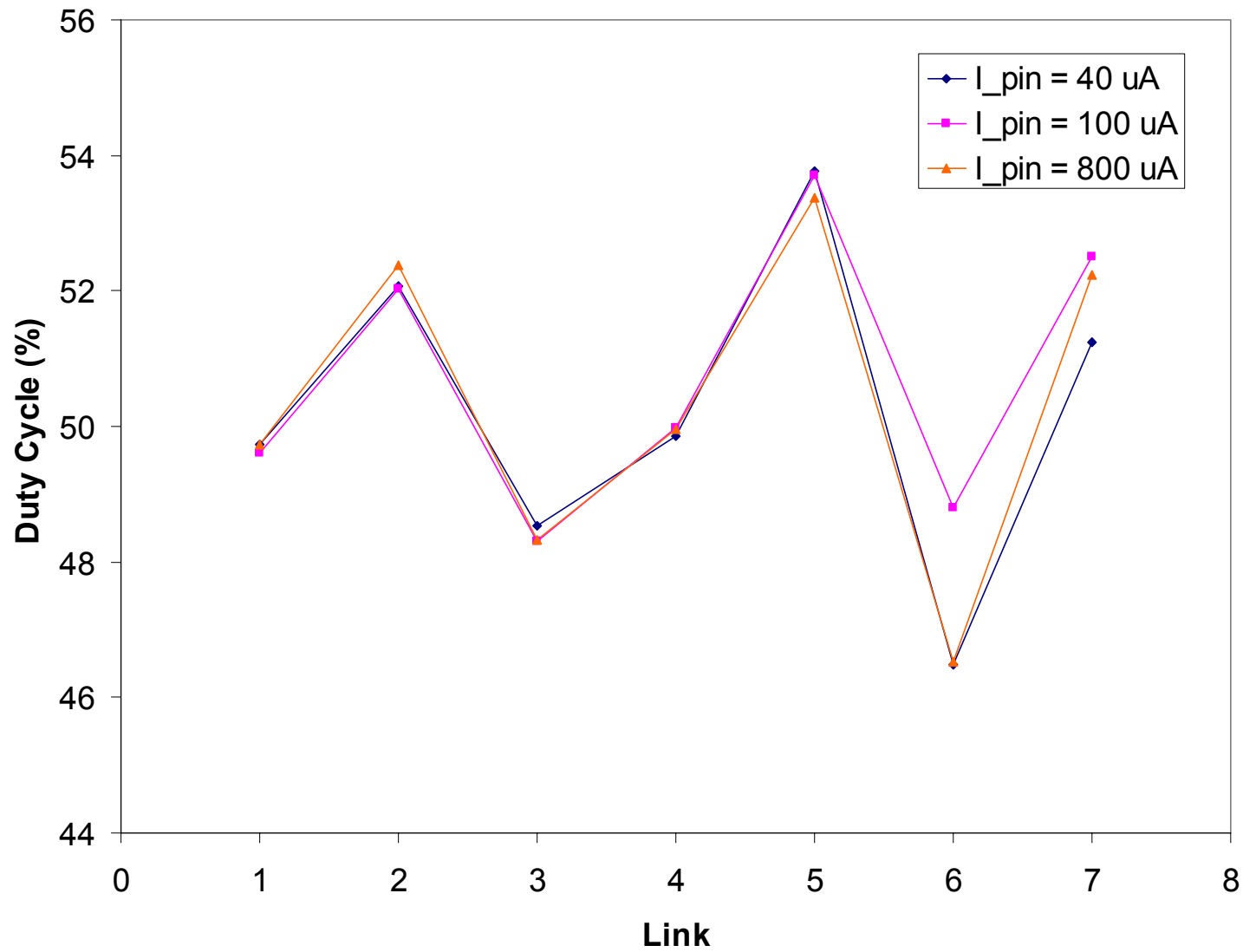
PRBS @ $I_{\text{PIN}} = 100 \mu\text{A}$

BeO OPTO-ELECTRICAL QA

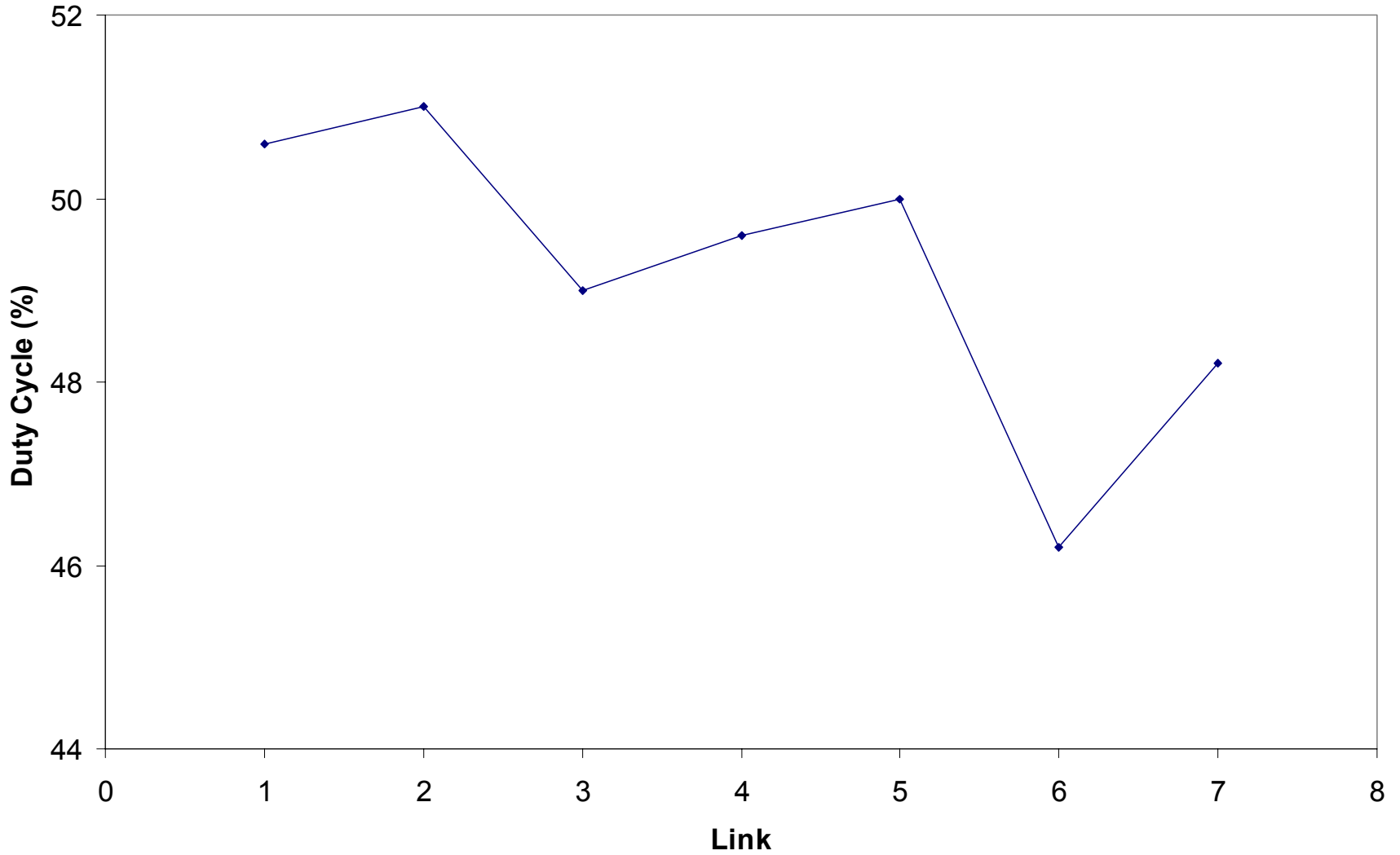
Jitter



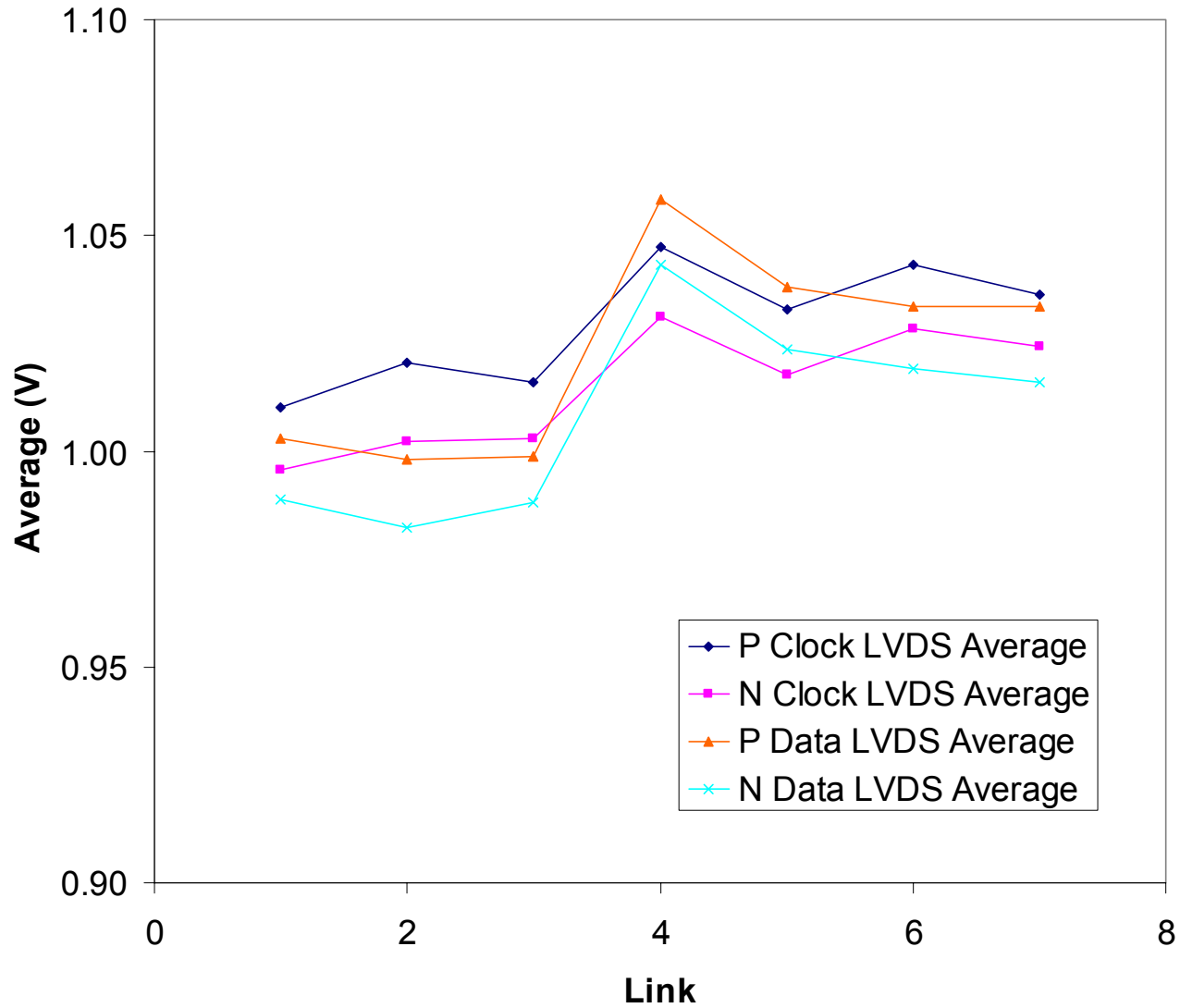
Electrical Duty Cycle



Optical Duty Cycle



Clock and Command +/- Average



Clock and Command +/- Amplitude

