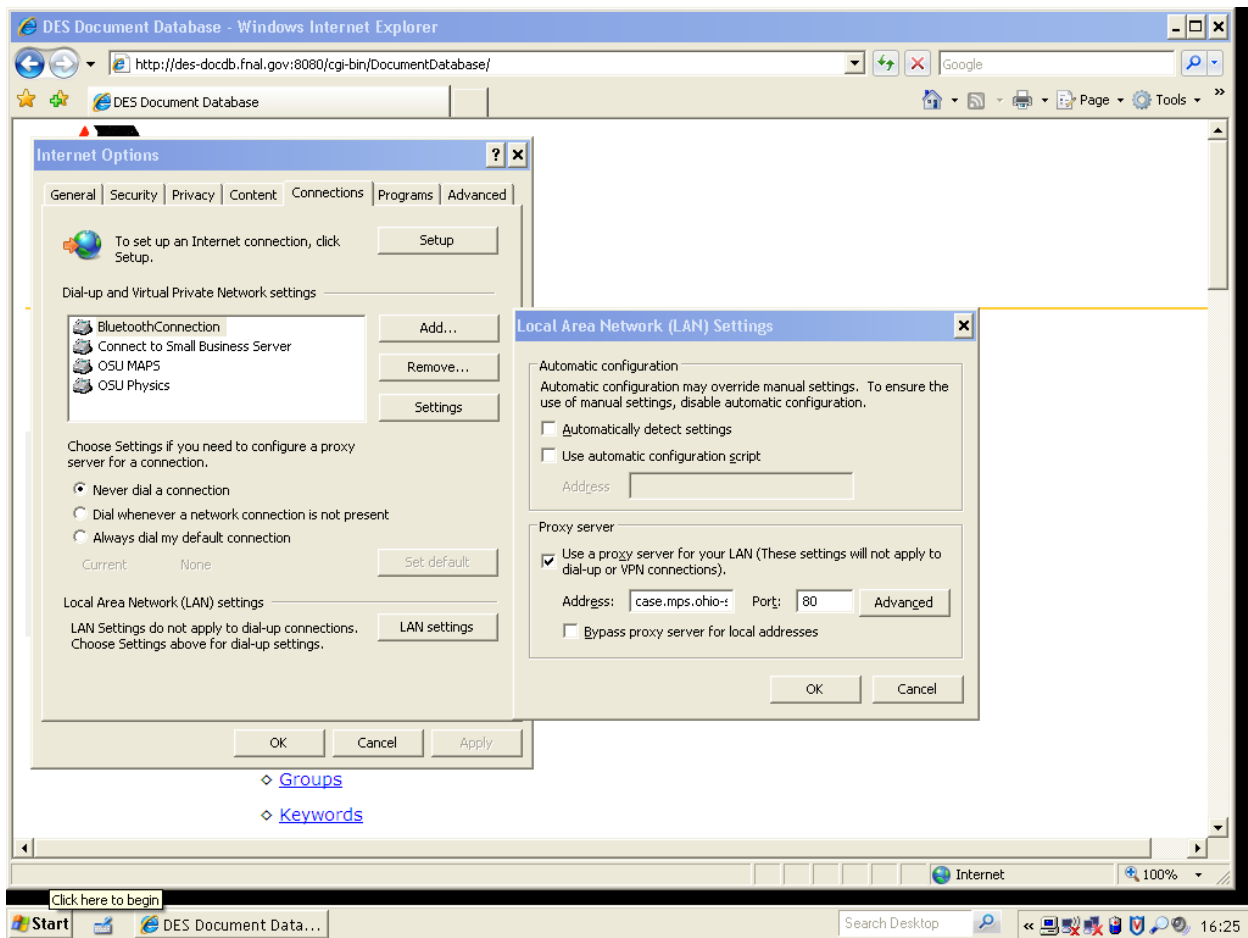


## Connection directions for OSU Physics web proxy

### Internet Explorer

- Open the Internet Options control panel.
- Click the connections tab.
- Click LAN settings.
- Check the “Use a proxy server...” box.
- Enter **case.mps.ohio-state.edu** in the Address text box.
- Click Ok.
- Click OK.

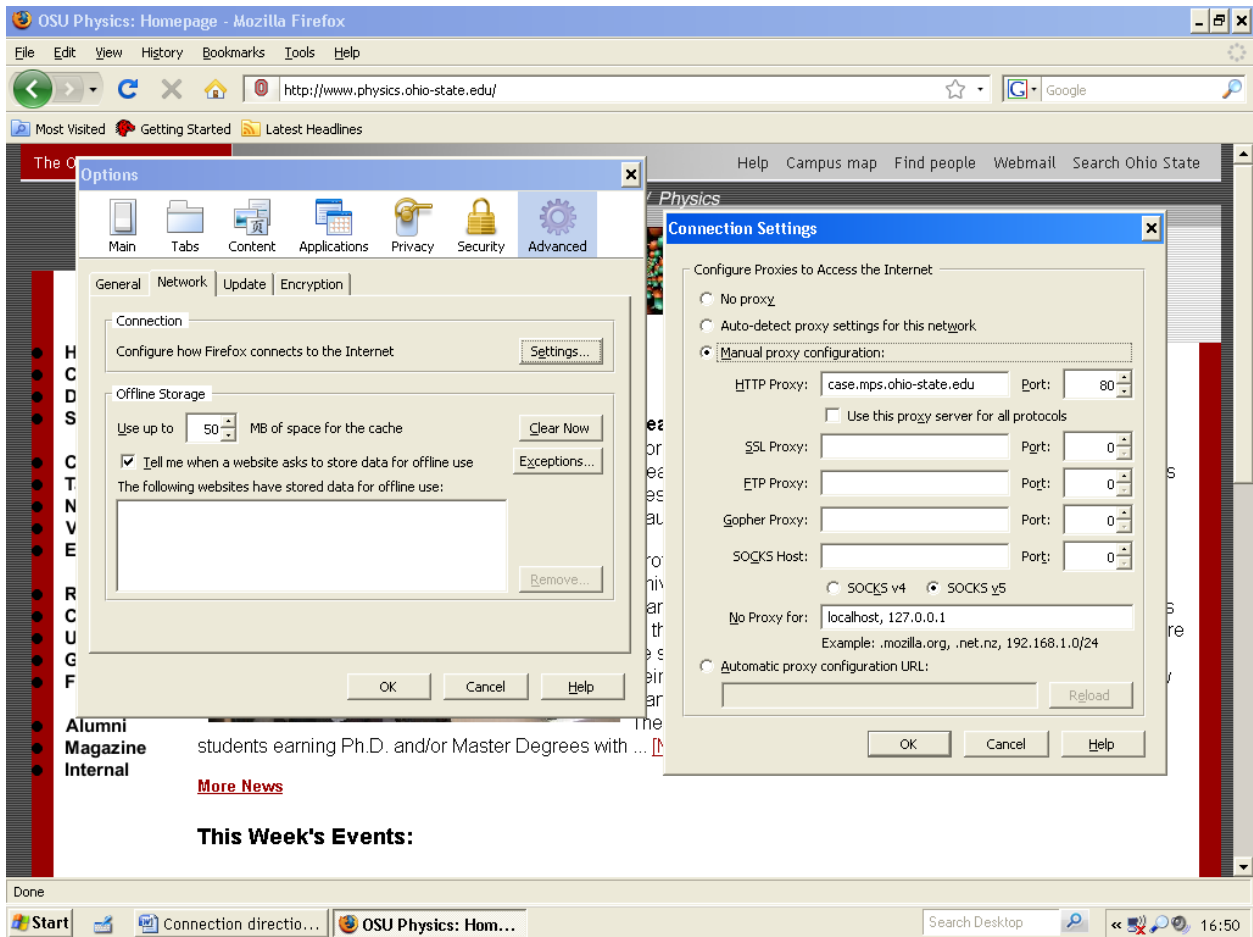
Note: You will need to clear the “Use a proxy server...” box when you leave OSU or web browsing will not work.



## Firefox

- In Firefox, click Tools -> Options.
- Click Advanced tab.
- Click Settings.
- Check the “Manual proxy configuration” radio button.
- Enter **case.mps.ohio-state.edu** in the “HTTP Proxy” text box.
- Click Ok.
- Click OK.

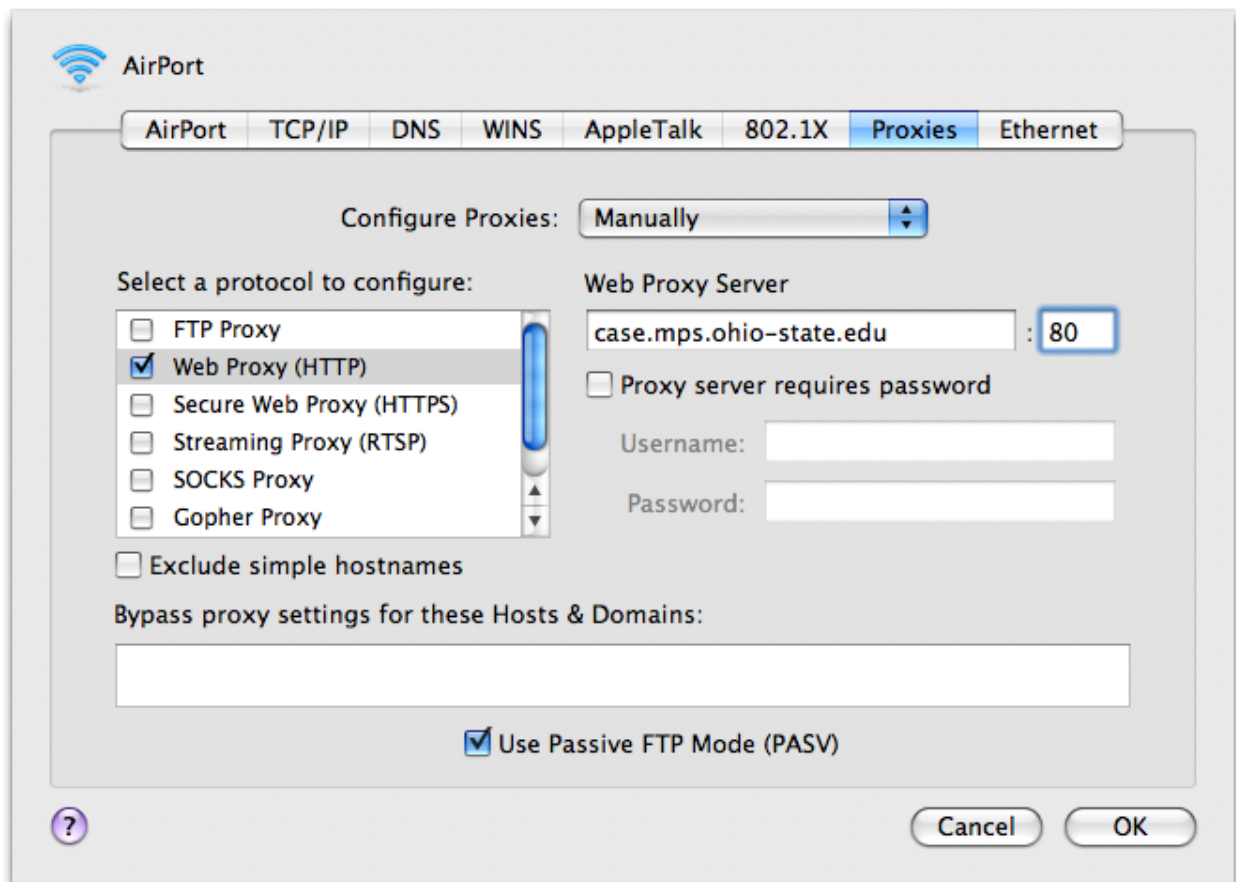
Note: You will need to clear the “Use a proxy server...” box when you leave OSU or web browsing will not work.



## MacOS 10.5

- Open Network preferences panel from System Preference.
- Under “Show”, click AirPort.
- Select Proxies tab.
- Under “Configure Proxies”, select “Manually”.
- Under “Select a proxy server to configure”, click “Web Proxy (HTTP)”
- Enter **case.mps.ohio-state.edu** in the “Web Proxy Server” text box, and 80 in the small text box that follows.
- Click “Apply Now”.
- Close the System Preferences.

Note: You will need to clear the “Web Proxy (HTTP)” box when you leave OSU or web browsing will not work.



## MacOS 10.4

- Open Network preferences panel from System Preference.
- Under “Show”, click AirPort.
- Select Proxies tab.
- Under “Configure Proxies”, select “Manually”.
- Under “Select a proxy server to configure”, click “Web Proxy (HTTP)”
- Enter **case.mps.ohio-state.edu** in the “Web Proxy Server” text box, and 80 in the small text box that follows.
- Click “Apply Now”.
- Close the System Preferences.

Note: You will need to clear the “Web Proxy (HTTP)” box when you leave OSU or web browsing will not work.

