

# FAKEBP

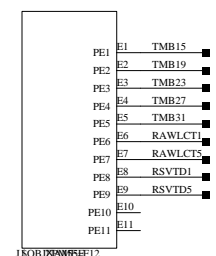
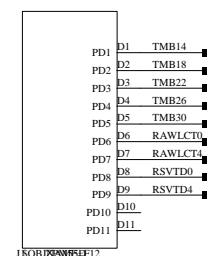
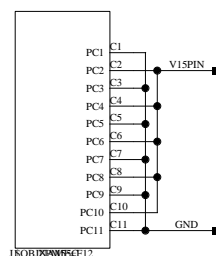
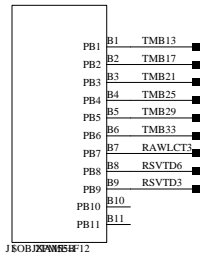
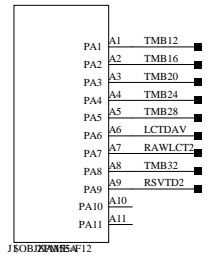
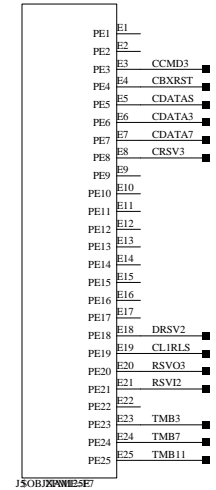
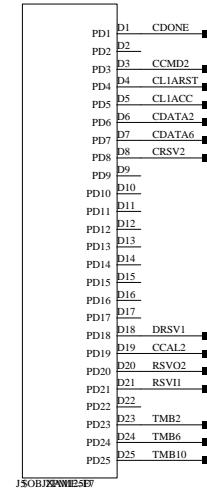
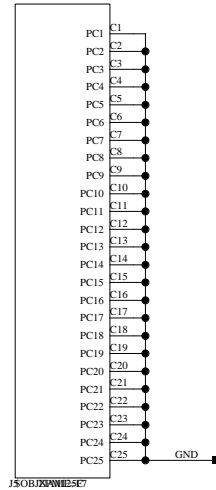
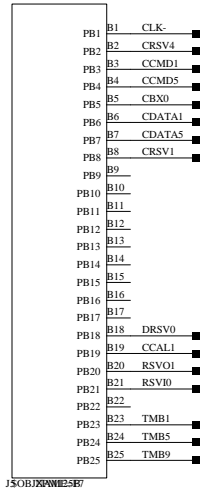
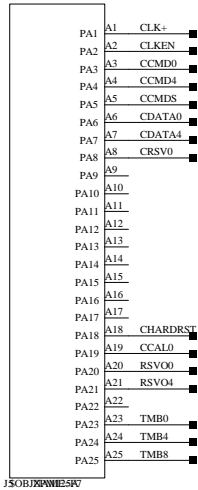
CMS CSC DAQMB Fake BackPlane

This board will plug in DAQMB --- Feb. 2001

CONTROL

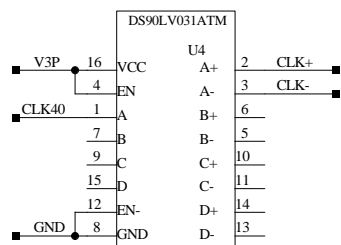
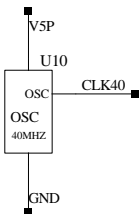
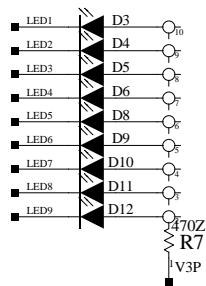
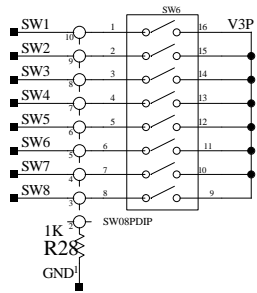
ELECTRONICS LAB  
PHYSICS DEPARTMENT  
THE OHIO STATE UNIVERSITY  
174 WEST 18TH AVE  
COLUMBUS OHIO 43210

These connectors are MALE RIGHT ANGLE, and plug in DAQMB connectors directly

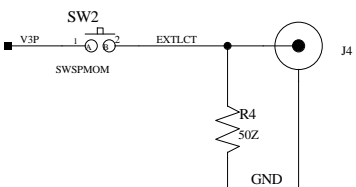


TMB[14:0]: CLCT/TMB data to 18-bit fifo  
 TMB[29:15]: Additional CLCT/TMB data to 36-bit fifo  
 TMB30: DDU special word flag  
 TMB31: Last word flag bit  
 TMB32: 40MHz clock to write to FIFO  
 TMB33: Fifo write\_enable inverted  
 Spare[7:1]: Used to exchange information in CFEB calibration mode

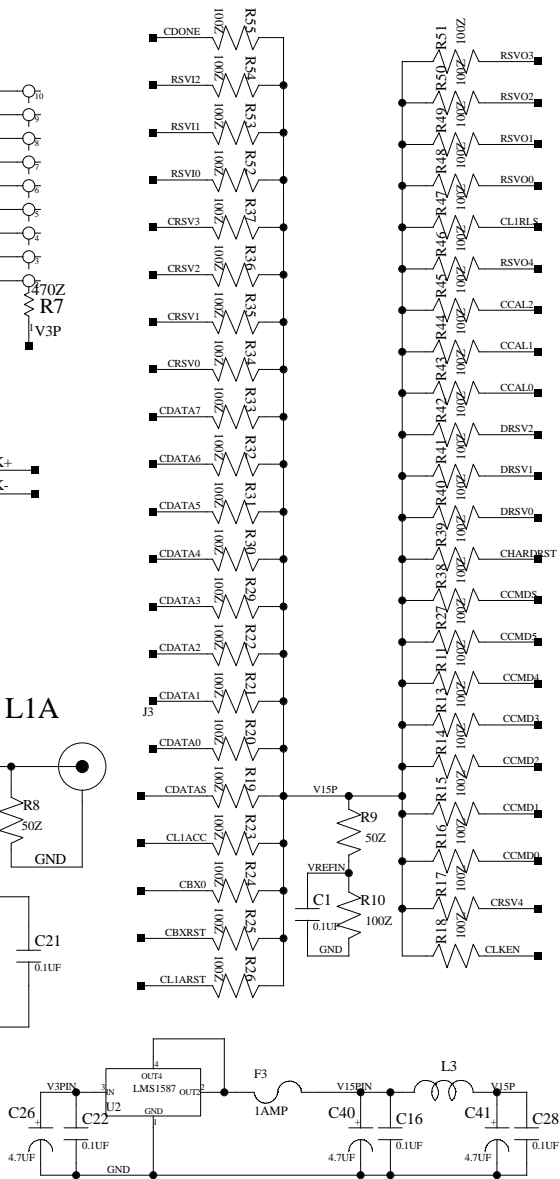
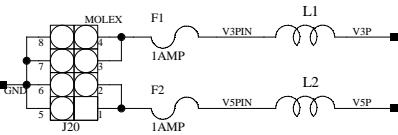
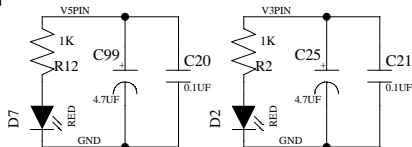
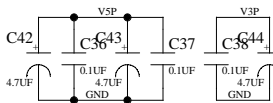
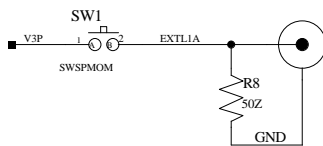




EXT LCT



EXT L1A



CCB data are GTLP, TMB data are LVTTTL

