



THE OHIO STATE UNIVERSITY

Smith Laboratory (0065)

174 West Eighteenth Avenue

Columbus OH 43210

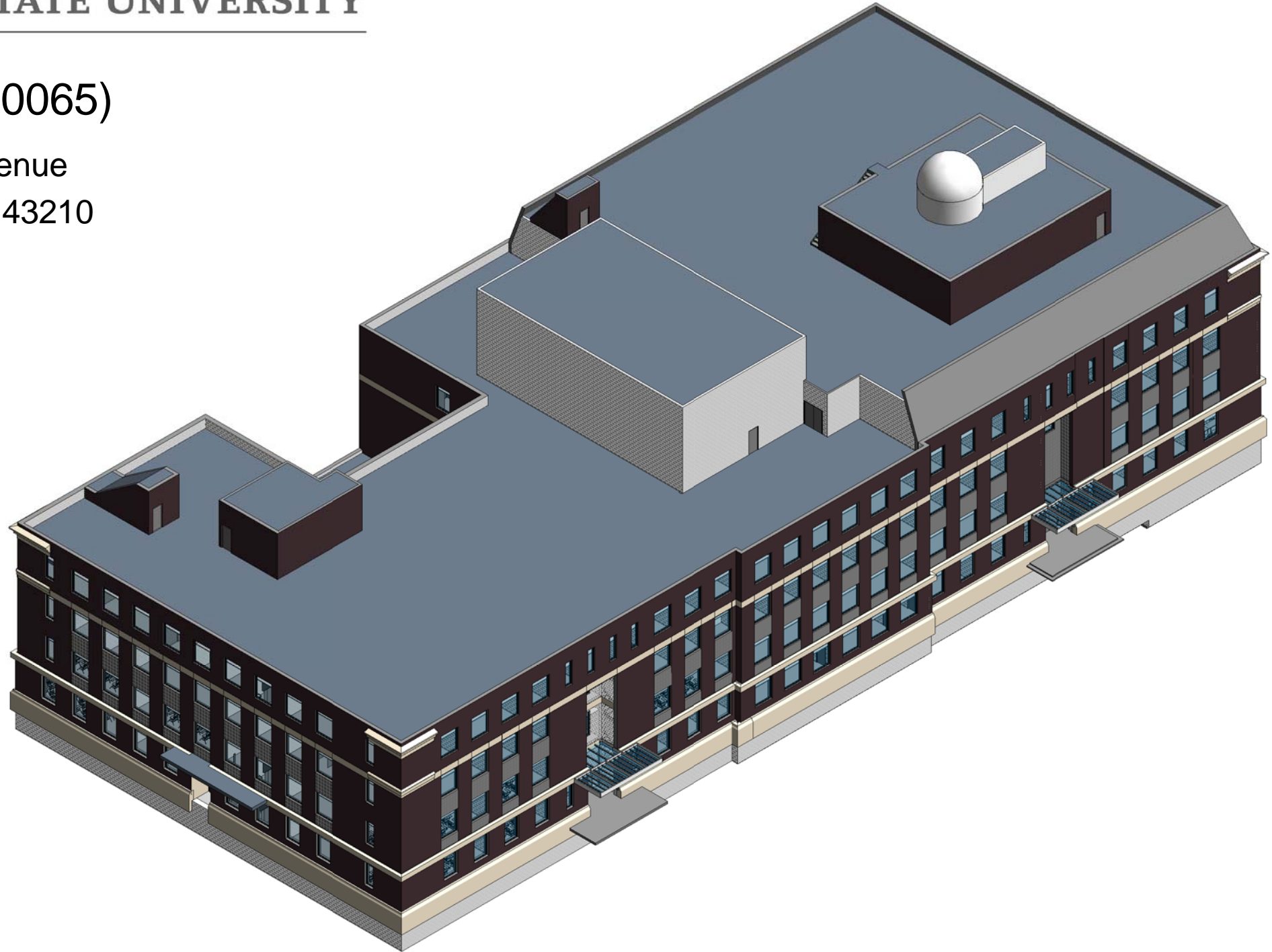
OSU Owned

Main Campus

Building GSF: 217509

Number of Floors: 9

Number of Spaces: 530





THE OHIO STATE UNIVERSITY

DISCLAIMER:

NO GUARANTEE IS IMPLIED AS TO THE ACCURACY OF DIMENSIONS OR BUILDING FEATURES SHOWN. USERS OF THIS DRAWING ASSUME ALL RESPONSIBILITY FOR VERIFYING ITS ACCURACY.

DRAWING DATES:

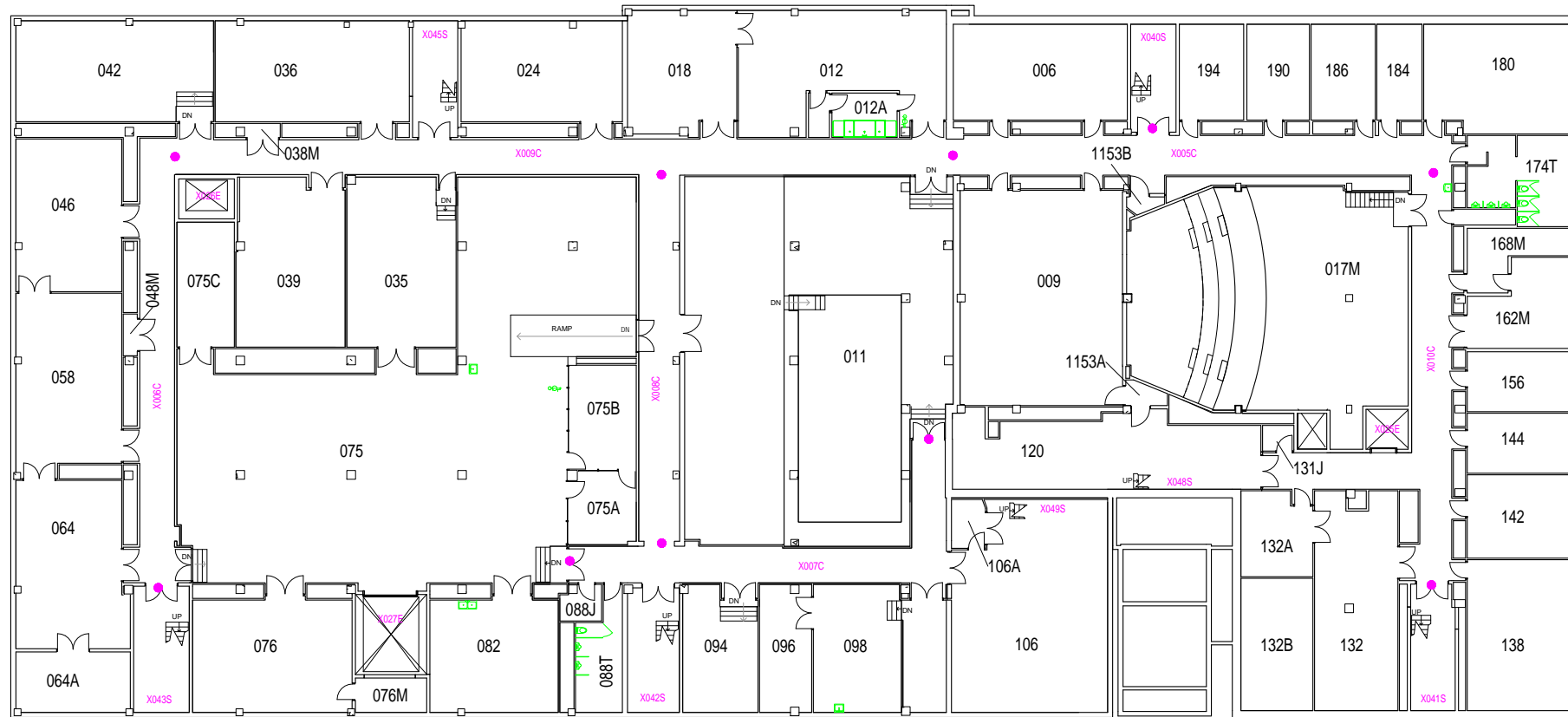
REVISED: 07/03/13 JRP

REVISED:

REVISED:

Smith Laboratory (0065)

174 West Eighteenth Avenue
OSU FACILITIES INFORMATION AND TECH SERVICES



0 4' 8' 16' 24' 32' FEET
SCALE

Basement Floor

SHEET NO.

01 / 09

X - NUMBERS INDICATE CIRCULATION AREAS.
● - INDICATES BOUNDARY OF CIRCULATION AREA.



THE OHIO STATE UNIVERSITY

DISCLAIMER:

NO GUARANTEE IS IMPLIED AS TO THE ACCURACY OF DIMENSIONS OR BUILDING FEATURES SHOWN. USERS OF THIS DRAWING ASSUME ALL RESPONSIBILITY FOR VERIFYING ITS ACCURACY.

DRAWING DATES:

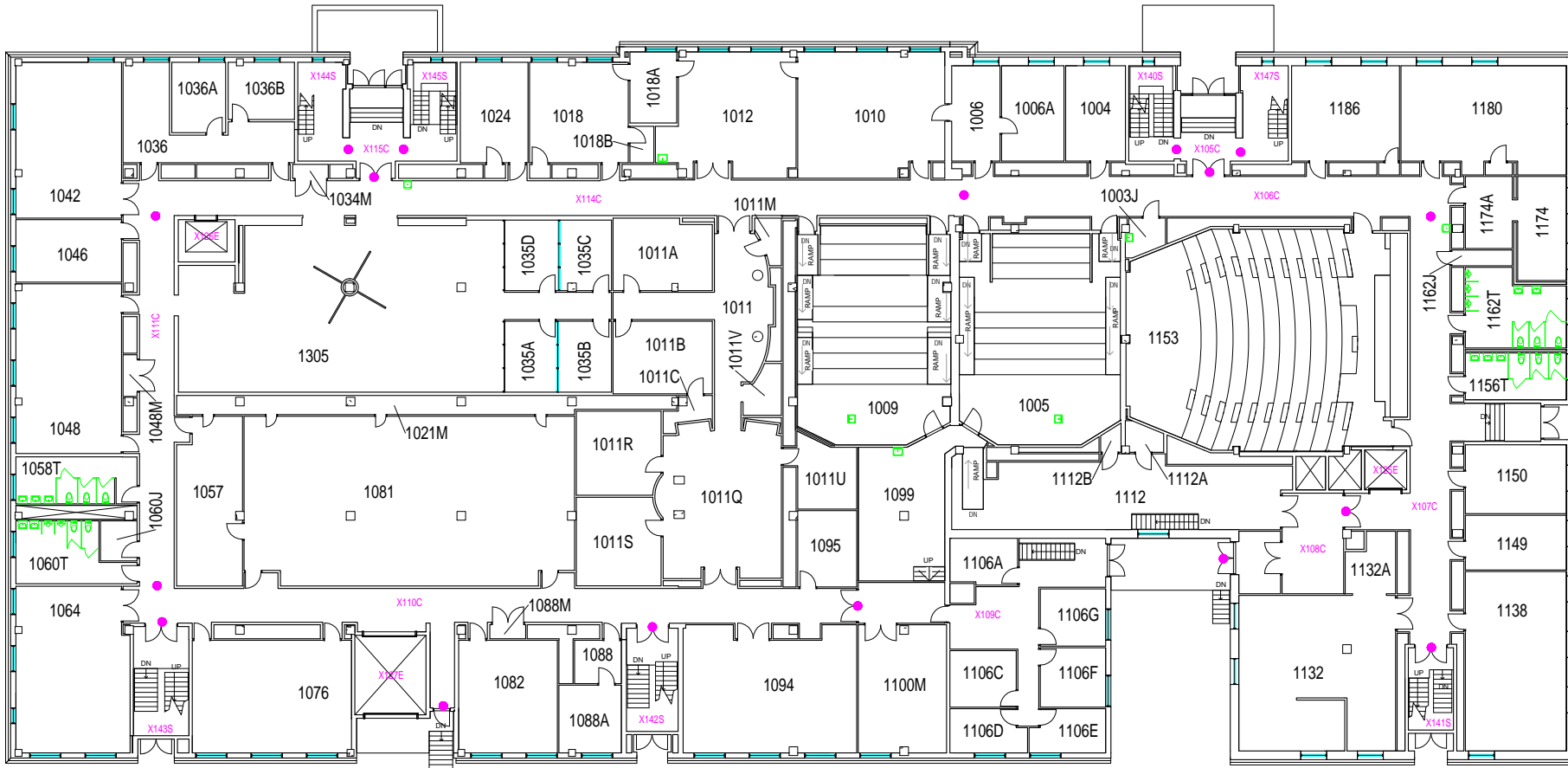
REVISED: 07/03/13 JRP

REVISED: _____

REVISED: _____

Smith Laboratory (0065)

174 West Eighteenth Avenue
OSU FACILITIES INFORMATION AND TECH SERVICES



First Floor

SHEET NO.

02 / 09

X - NUMBERS INDICATE CIRCULATION AREAS.
● - INDICATES BOUNDARY OF CIRCULATION AREA.



THE OHIO STATE UNIVERSITY

DISCLAIMER:

NO GUARANTEE IS IMPLIED AS TO THE ACCURACY OF DIMENSIONS OR BUILDING FEATURES SHOWN. USERS OF THIS DRAWING ASSUME ALL RESPONSIBILITY FOR VERIFYING ITS ACCURACY.

DRAWING DATES:

REVISED: 07/03/13 JRP

REVISED: 02/19/2014 OJT

REVISED:

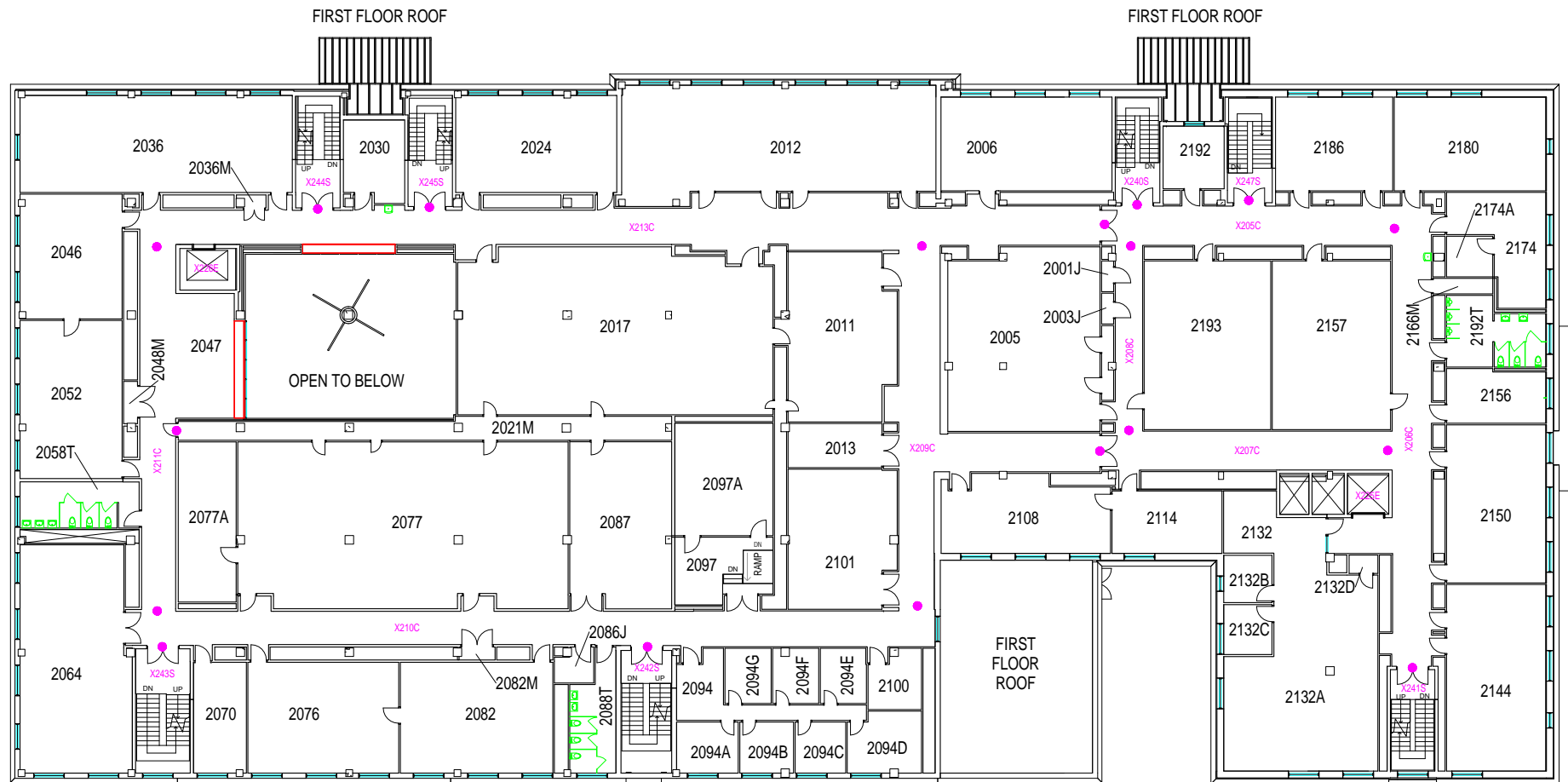
Smith Laboratory (0065)

174 West Eighteenth Avenue

OSU FACILITIES INFORMATION AND TECH SERVICES

SHEET NO.

03 / 09



Second Floor

X - NUMBERS INDICATE CIRCULATION AREAS.
● - INDICATES BOUNDARY OF CIRCULATION AREA.



THE OHIO STATE UNIVERSITY

DISCLAIMER:

NO GUARANTEE IS IMPLIED AS TO THE ACCURACY OF DIMENSIONS OR BUILDING FEATURES SHOWN. USERS OF THIS DRAWING ASSUME ALL RESPONSIBILITY FOR VERIFYING ITS ACCURACY.

DRAWING DATES:

REVISED: 07/03/13 JRP

REVISED: 02/19/2014 OJT

REVISED:

Smith Laboratory (0065)

174 West Eighteenth Avenue
OSU FACILITIES INFORMATION AND TECH SERVICES

SHEET NO.

04 / 09



X - NUMBERS INDICATE CIRCULATION AREAS.
● - INDICATES BOUNDARY OF CIRCULATION AREA.

Third Floor



THE OHIO STATE UNIVERSITY

DISCLAIMER:

NO GUARANTEE IS IMPLIED AS TO THE ACCURACY OF DIMENSIONS OR BUILDING FEATURES SHOWN. USERS OF THIS DRAWING ASSUME ALL RESPONSIBILITY FOR VERIFYING ITS ACCURACY.

DRAWING DATES:

REVISED: 07/03/13 JRP

REVISED:

REVISED:

Smith Laboratory (0065)

174 West Eighteenth Avenue

OSU FACILITIES INFORMATION AND TECH SERVICES

SHEET NO.

05 / 09



Fourth Floor

X - NUMBERS INDICATE CIRCULATION AREAS.
● - INDICATES BOUNDARY OF CIRCULATION AREA.



THE OHIO STATE UNIVERSITY

DISCLAIMER:

NO GUARANTEE IS IMPLIED AS TO THE ACCURACY OF DIMENSIONS OR BUILDING FEATURES SHOWN. USERS OF THIS DRAWING ASSUME ALL RESPONSIBILITY FOR VERIFYING ITS ACCURACY.

DRAWING DATES:

REVISED: 07/03/13 JRP

REVISED: 09/12/2013 OJT

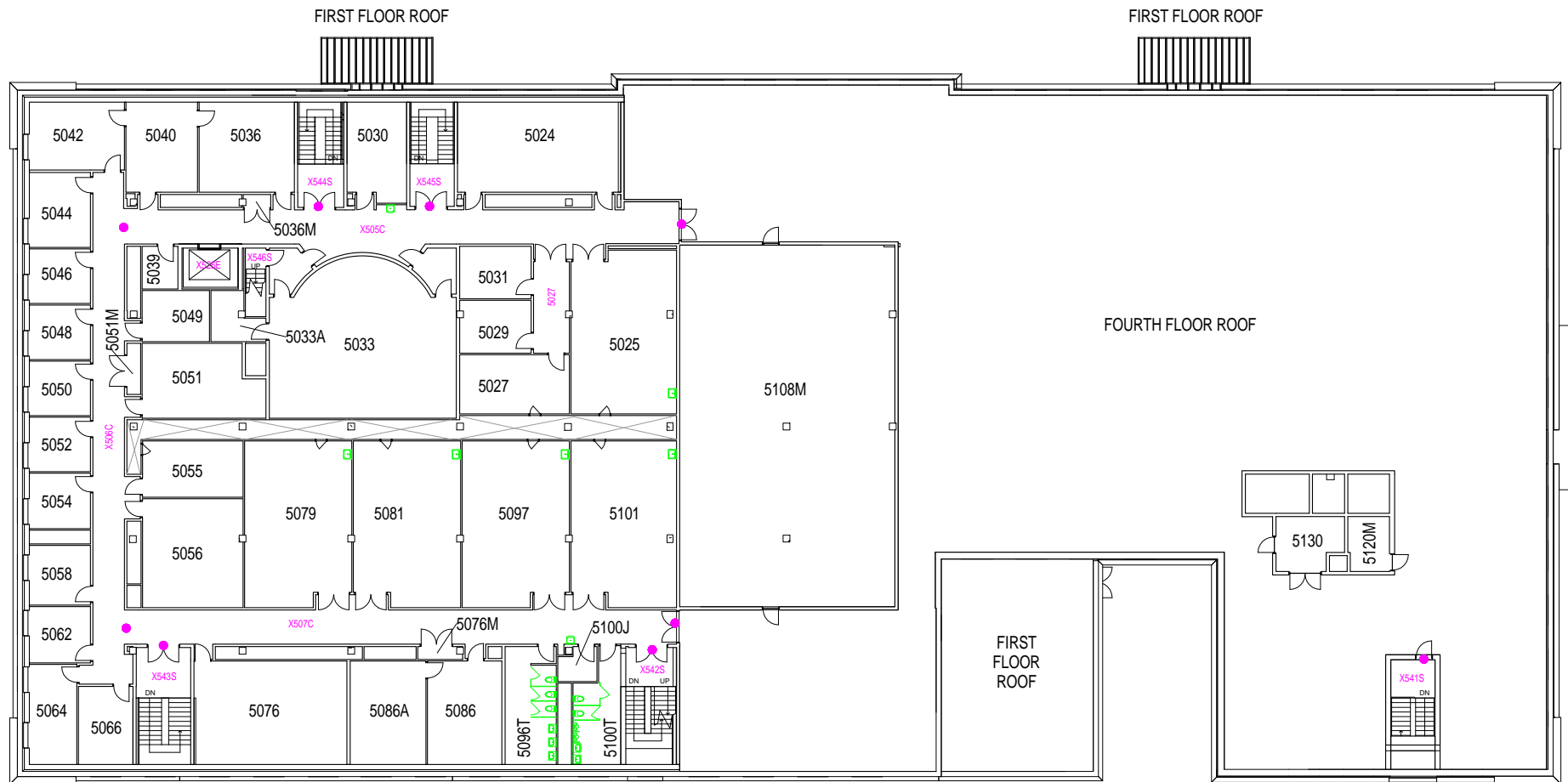
REVISED:

Smith Laboratory (0065)

174 West Eighteenth Avenue
OSU FACILITIES INFORMATION AND TECH SERVICES

SHEET NO.

06 / 09



Fifth Floor

X - NUMBERS INDICATE CIRCULATION AREAS.
● - INDICATES BOUNDARY OF CIRCULATION AREA.



THE OHIO STATE UNIVERSITY

DISCLAIMER:

NO GUARANTEE IS IMPLIED AS TO THE ACCURACY OF DIMENSIONS OR BUILDING FEATURES SHOWN. USERS OF THIS DRAWING ASSUME ALL RESPONSIBILITY FOR VERIFYING ITS ACCURACY.

DRAWING DATES:

REVISED: 07/03/13 JRP

REVISED: _____

REVISED: _____

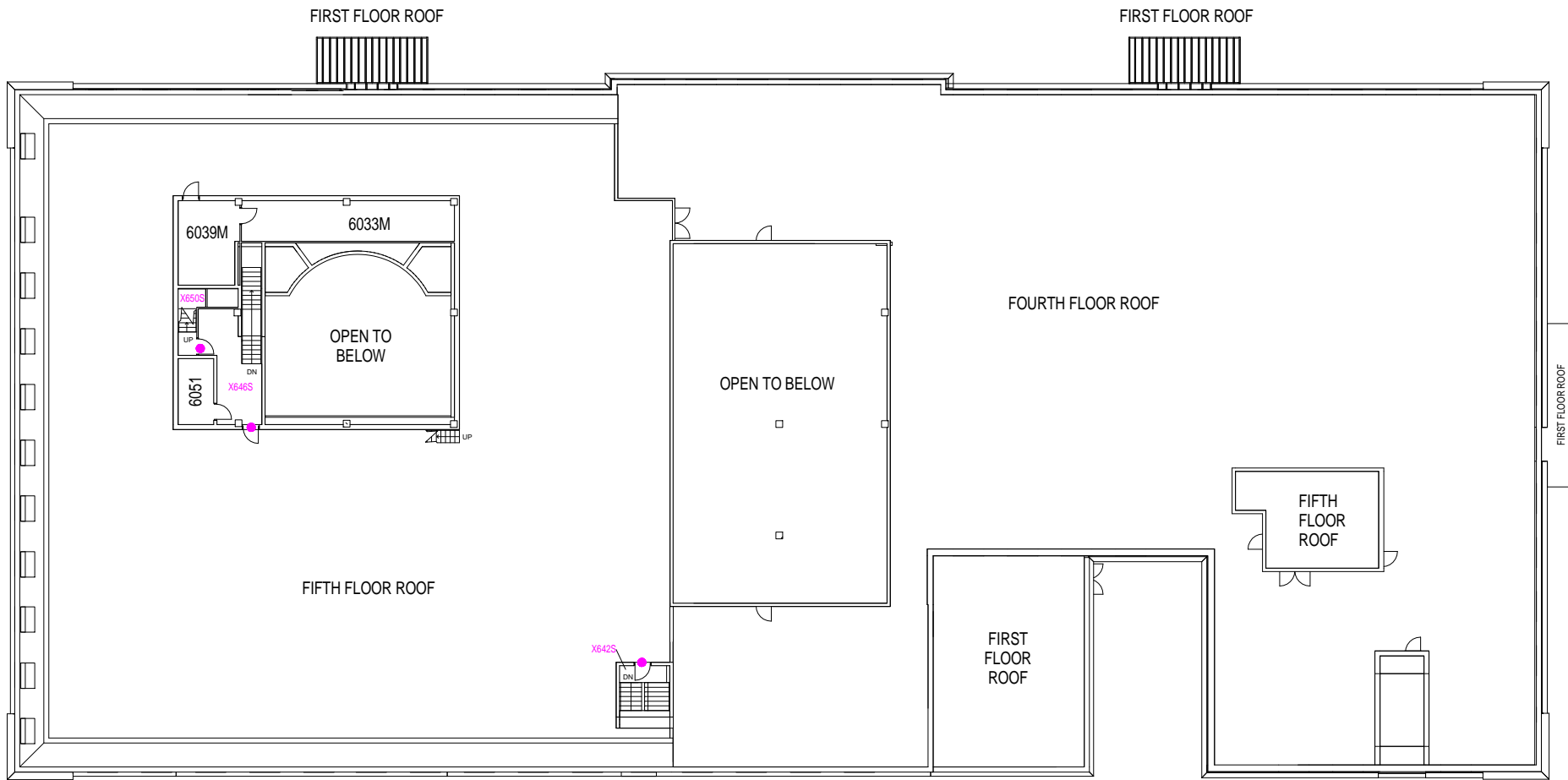
Smith Laboratory (0065)

174 West Eighteenth Avenue

OSU FACILITIES INFORMATION AND TECH SERVICES

SHEET NO.

07 / 09



0 4' 8' 16' 24' 32' FEET
SCALE

Sixth Floor

X - NUMBERS INDICATE CIRCULATION AREAS.
● - INDICATES BOUNDARY OF CIRCULATION AREA.



THE OHIO STATE UNIVERSITY

DISCLAIMER:

NO GUARANTEE IS IMPLIED AS TO THE ACCURACY OF DIMENSIONS OR BUILDING FEATURES SHOWN. USERS OF THIS DRAWING ASSUME ALL RESPONSIBILITY FOR VERIFYING ITS ACCURACY.

DRAWING DATES:

REVISED: 07/03/13 JRP

REVISED: _____

REVISED: _____

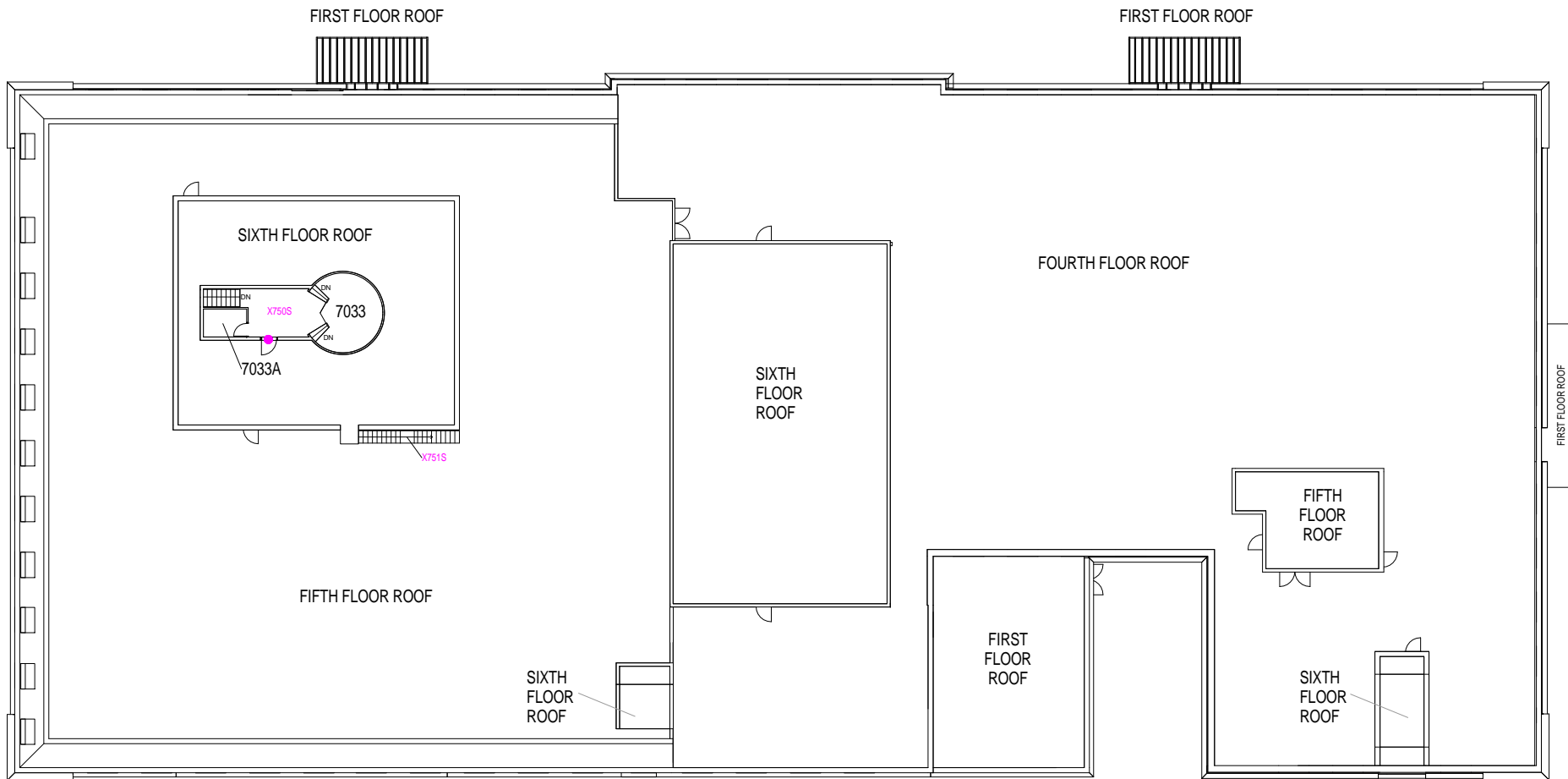
Smith Laboratory (0065)

174 West Eighteenth Avenue

OSU FACILITIES INFORMATION AND TECH SERVICES

SHEET NO.

08 / 09



0 4' 8' 16' 24' 32' FEET
SCALE

Seventh Floor

X - NUMBERS INDICATE CIRCULATION AREAS.
● - INDICATES BOUNDARY OF CIRCULATION AREA.



**THE OHIO STATE
UNIVERSITY**

DISCLAIMER:

NO GUARANTEE IS IMPLIED AS TO THE ACCURACY OF DIMENSIONS OR BUILDING FEATURES SHOWN. USERS OF THIS DRAWING ASSUME ALL RESPONSIBILITY FOR VERIFYING ITS ACCURACY.

DRAWING DATES:

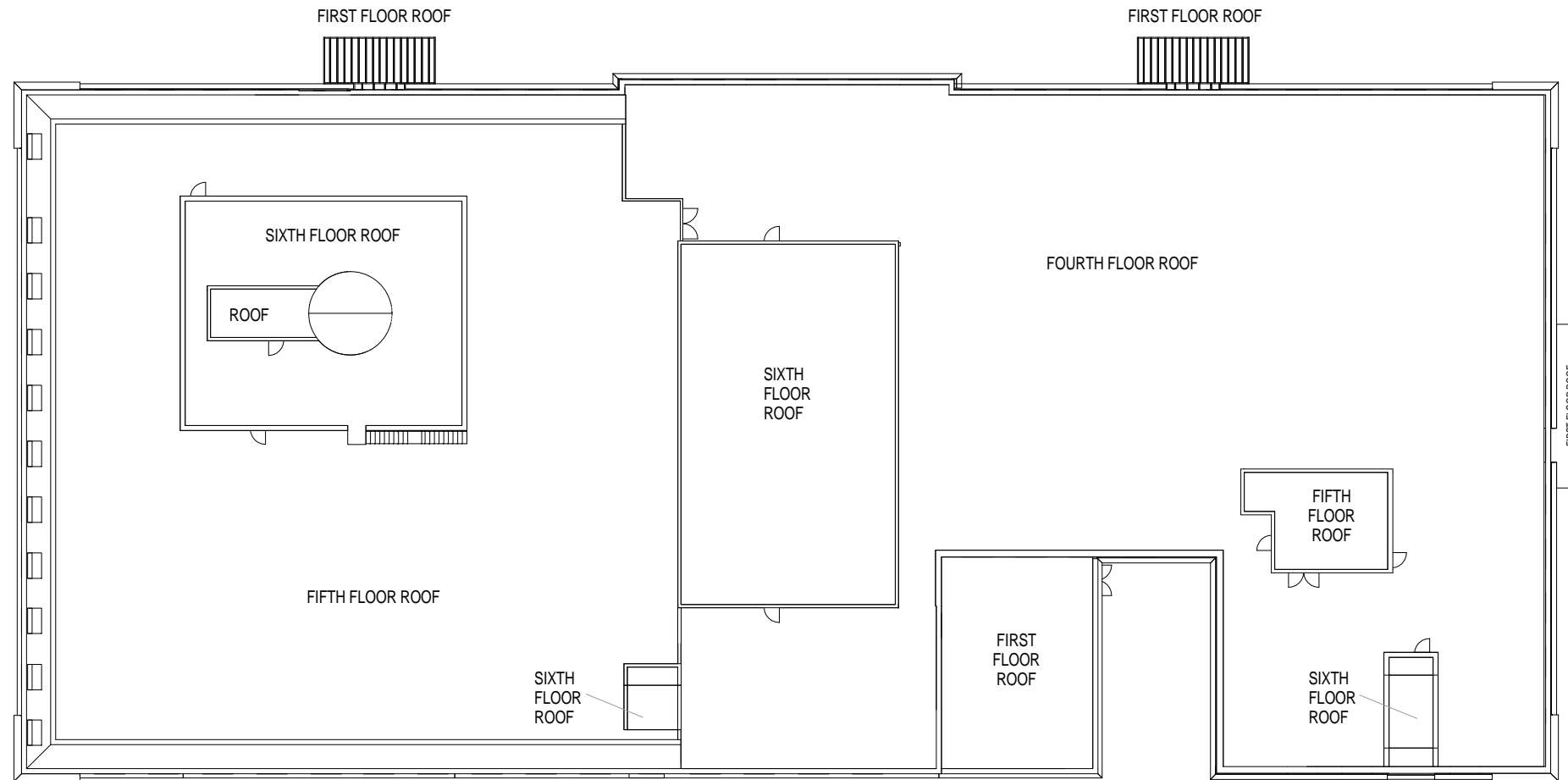
REVISED: 07/03/13 JRP

REVISED: _____

REVISED: _____

Smith Laboratory (0065)

174 West Eighteenth Avenue
OSU FACILITIES INFORMATION AND TECH SERVICES



0 4' 8' 16' 24' 32' FEET
SCALE

Roof

SHEET NO.

09 / 09

X - NUMBERS INDICATE CIRCULATION AREAS.
● - INDICATES BOUNDARY OF CIRCULATION AREA.