



**THE OHIO STATE UNIVERSITY**

**DISCLAIMER:**

NO GUARANTEE IS IMPLIED AS TO THE ACCURACY OF DIMENSIONS OR BUILDING FEATURES SHOWN. USERS OF THIS DRAWING ASSUME ALL RESPONSIBILITY FOR VERIFYING ITS ACCURACY.

**DRAWING DATES:**

REVISED: 07/03/13 JRP

REVISED: \_\_\_\_\_

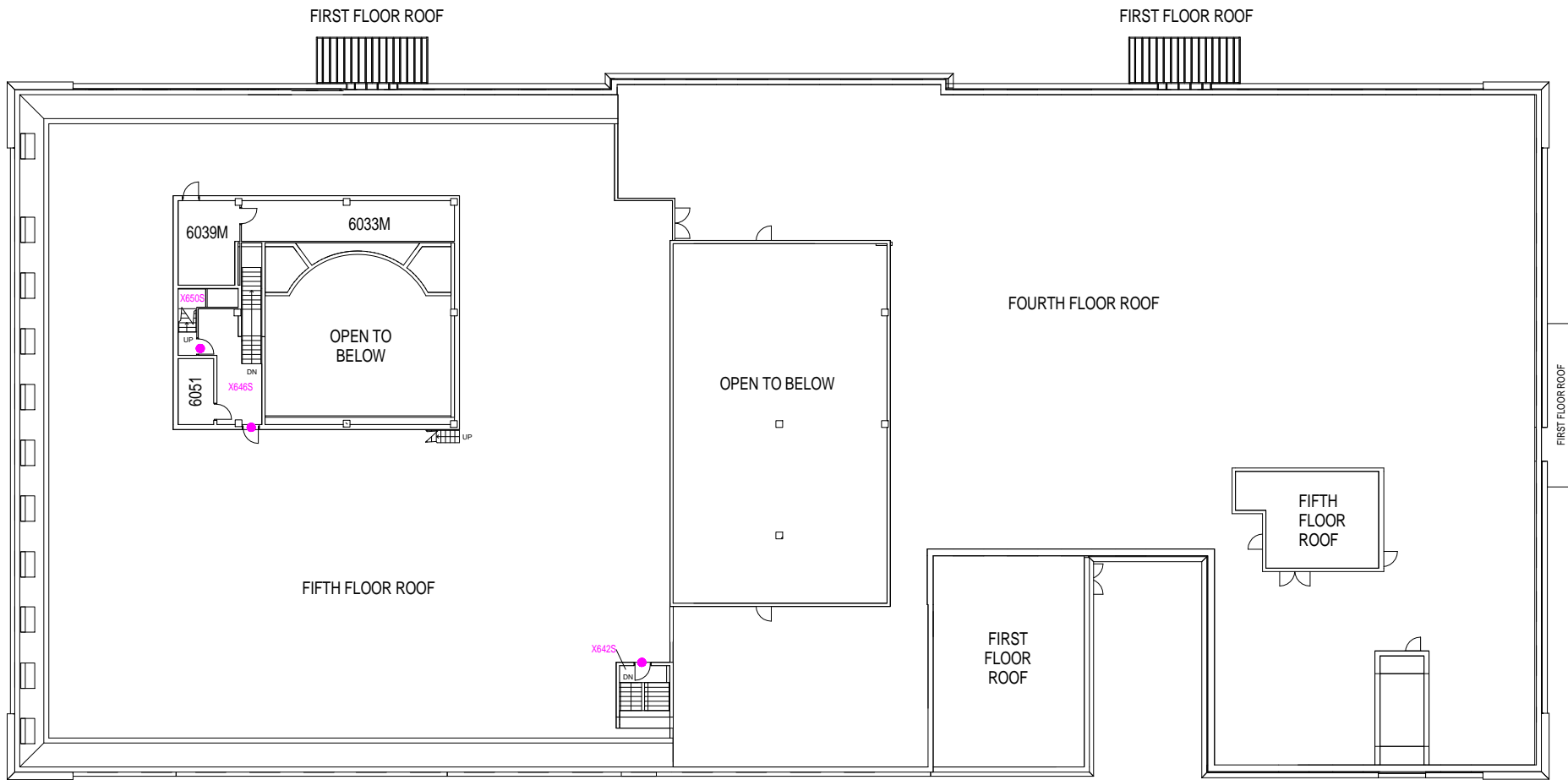
REVISED: \_\_\_\_\_

**Smith Laboratory (0065)**

174 West Eighteenth Avenue  
OSU FACILITIES INFORMATION AND TECH SERVICES

SHEET NO.

**07 / 09**



0 4' 8' 16' 24' 32' FEET  
SCALE

**Sixth Floor**

X - NUMBERS INDICATE CIRCULATION AREAS.  
● - INDICATES BOUNDARY OF CIRCULATION AREA.